

OFFICIAL PUBLICATION OF THE EAST VALLEY MODEL T FORD CLUB

November 2014

Volume 12, Issue 8

CALENDAR OF EVENTS

November 2014

- 2 EVMTFC Ice Cream Fling 3:00 pm
Joe's Italian Ice, Tempe
- 8 Annual Festival of the Superstitions
Car Show, 9:00 am Apache Junction
- 11 Veterans Day Parade, 9:00 am
Apache Junction
- 15 Tech Clinic, Jim Guinn, 9:00 am
Glendale
- 20 General Meeting, 7:00 pm
Citadel Community Center, Mesa
(SW corner Broadway & Higley)
- 27 Thanksgiving Day Parade, 9:00 am
Fountain Hills

December 2014

- 6 EVMTFC Christmas Party, 3:00 pm
Canyon Vistas RV Resort, Gold Canyon
- 6 Holiday Program & Light Parade,
7:00 pm, Apache Junction
- 7 EVMTFC Ice Cream Fling - TBA

January 2015

- 4 EVMTFC Ice Cream Fling - TBA



Cranberry Harvesting in Wareham, MA.
Photo by Lou Zadra, a MTFCA member from
Stoughton, Massachusetts.

Joe Fellin received a very colorful photo from his cousin about cranberry harvesting. What is especially interesting is that the harvester has a Model T with an Ocean Spray logo on the door.

**MTFCA Triple Matching Grant Opportunity**

The MTFCA has informed us that a TRIPLE matching grant opportunity is available for donations RECEIVED by the MTFCA within the very tight window of **Monday, Nov. 10 thru Friday, Nov. 21**. For details, see the notice letter attached at the end of this newsletter.

PRESIDENT'S MESSAGE

By: Steve Nissle

Greetings to all!

We are so pleased to see more club members arriving to the Valley of the Sun! Our first meeting at our new location was well attended! I had 3 people comment that the new location is going to work out great!

We were entertained by Frank Friddle as he shared his stories of driving cross country as a child with his family in a Model T! It's always amazing to hear first hand stories of living life in the Model T era!

Our calendar is filling with various events to gather, drive, assist and eat together.

I look forward to spending time with everyone, as I'm sure you do too!

See you all soon!

Keep on drivin'!

Steve



INAUGURAL SUNDAY ICE CREAM FLING at UDDER DELIGHTS ~ October 5th in Gilbert

By: Bert Diehl, Jr. ~ Photos by: Bert Diehl, Jr. & Lorie Poppe

The first EVMTFC Sunday Ice Cream Fling was held on October 5th, 2014 at the Udder Delights located on the southwest corner of Val Vista and Warner roads in Gilbert. Ten club members arrived at the ice store around 3 PM in three Model T's, one Model A, a 'T'bird and a modern or two to enjoy a cool treat on a warm afternoon.



There was an interesting selection of premium ice cream and sorbet flavors to choose from. While there we were the only customers in the store and rearranged the seating to fit our needs. Good ice cream, pleasant conversation and a good excuse to get the ol' Ford out for some exercise.



The November Ice Cream Fling will be held on November 2nd at Joe's Italian Ice in Tempe.
See you at 3 PM!

EVMTFC (East Valley Model T Ford Club)**Website: evmtfc.com**

Be sure to check our website often for new and updated information.

**Officers/Contact Information:**

Steve Nissle, President (Board Member); 480-226-6883. stevenissle@gmail.com

Tom Hoverson, Vice President/Membership (Board Member); 602-292-3921. tom1757@aol.com

Bert Diehl, Secretary (Board Member); 480-325-6308. bedeal@aol.com

Dave Veres, Treasurer (Board Member); 480-897-2209. davidveres@aol.com

Claudia Linney, Immediate Past President; 480-288-0726. scflinney@gmail.com

Other Assignments:

Dolores Stolinski, Historian; 480-986-0711. edslim012@gmail.com

Jan Peterson, Health & Welfare/Smiley Person; 480-969-0695. janpeterson@interwrx.com

Mel & Lorie Poppe, Newsletter Editors; 402-984-6381. LMP_2006@hotmail.com

Membership Dues:

Dues are \$20 per year and include all family members. Please make payment by check payable to East Valley Model T Ford Club. Submit application in person at any member meeting or mail it to: David Veres, Treasurer, EVMTFC, PO Box 24502, Tempe AZ 85285.

Applications for membership in the EVMTFC may be printed from the website at evmtfc.com, or obtained from any current member or from the Vice President/Membership Chairman.

Newsletters:

Our monthly newsletter, *Runningboard News*, can be viewed on our website. All articles, photos and information for the upcoming newsletter is due to the Editors by the 26th of the month.

Members Cars (Our T's):

Steve Nissle can take a photo of your T...contact Steve if you are interested.

Dave Veres can put a picture of your T on our website...send him a photo of your T with or without you in the photo.

MTFCA (Model T Ford Club of America):

The EVMTFC is affiliated with, and is a chapter of, the MTFCA, a national and international organization. Membership is strongly encouraged. As a chapter of the MTFCA, at least 50% of our members must be members of the national club to keep our free liability insurance. Our club is doing very well in this regard, as almost all of our members belong to the national club.

Membership in the MTFCA includes all the privileges of the Club, including six issues of the *Vintage Ford* and one voting ballot per member-family for election of the Club's Board of Directors. Annual dues are \$40. Lifetime Memberships are available. Payment may be made by check, credit card or PayPal.

Are your MTFCA dues paid up? If your MTFCA member number is not listed on the roster, please call the President or the Treasurer with the number. The number is shown on your mailing label when you receive your *Vintage Ford* magazine.

The Model T Ford Club of America, PO Box 126, Centerville IN 47330-0126

Phone: 765-855-5248. Fax: 765-855-3428.

E-mail: admin@mtfca.com

Website: www.mtfca.com



BOYS IN BLUE CAR SHOW ~ October 25th in Mesa

By: Bert Diehl, Jr

If you enjoy being around cars and car people, then Arizona is the place to be at this time of the year, because there are numerous car shows every weekend. Sometimes it's hard to decide which one to go to and there are times when you'd like to go to several of them on the same day. The heat at this time of the year can take it's toll on an old man's body but pace yourself and it's 'doable'.



One of the larger shows held on Saturday, October 25th was the 'Boys in Blue' show at the Mesa Marketplace on the northwest corner of Baseline and Signal Butte in



Mesa. There were approximately 400 cars in the west parking lot of the Marketplace along with quite a few vendors hawking food, massages, insurance, etc.

It's interesting to note that there didn't appear to be a 'stock' Model T or A in the lot but there were a number of T and A based cars. The trend seems to be more towards cars and trucks from the 50's, 60's and 70's but a Model T or Model A still gets plenty of attention.



The 'Boys In Blue' show was organized by the Mesa Police Department and they do a nice job of organizing the show.



It was a 4 hour show scheduled from 9-1 and it sure got warm around 11 AM. Periodic breaks for a cold drink, a little shade make it bearable, and the people watching is great.



Oh yeah, the front seat of your car becomes a receptacle for car show flyers!



CAR SHOW at JOHN CALVIN CHURCH ~ October 26th in Apache Junction*By: Austin Graton Photo by: Joe Fellin*

On Saturday, October 26th, Joe met at my house in his Centerdoor and followed me in the Downs' T to the church, about a three mile trip. When we arrived, Bill Allen was there with the wood bodied T he put together about a year ago. He and Steve Francois were just leaving in Steve's NEW 1966 Mustang hardtop to go get Bill's T Roadster pickup he just finished. Steve's Mustang was on it's maiden voyage, as he had just finished putting it together after about a years worth of work.

Larry Hart was there with his rumble seat equipped T roadster. He had also shuttled Gerald Hurysz' 1913 red Touring to the show. I had brought our club's Eazyup canopy for shade as it was a warm day, in excess of 90 degrees and no other shade initially. I also brought a 'For Sale' sign and put it on the Downs' roadster in another effort to sell it. Sandy Hart joined us a while later in her Really New yellow Mustang convertible.

A little after noon we went in to the church for a hot dog, chips and a drink. While we were eating, I got a call from Daphene Downs that she had someone who was interested in trying out their T and was out in the parking lot with them. I hurried out to meet them as they had just arrived after we went in to eat. The potential buyers were a couple of guys from Germany who come here about three times a year to buy cars to ship home and resell. I drove one of them around the parking lot in the T. After the ride, he and Daphene negotiated a bit on the price but did not reach agreement.

Unfortunately, the show was not very well attended by spectators. The Corvette Club was represented with about 10 cars. There were also a few other vintage cars at the show as well. There was a mule pulling a wagon which was offering rides with a singing mule skinner driving. The show broke up around 2 pm.



"The newest addition to our "stable" of Model T's. Race, anyone???"

CRUISE INS...are regularly scheduled weekly or monthly car gatherings. Please confirm information before relying on it, locations and times can change without notice. A car club event, whether a show, race or cruise-in, is always great fun for the individual or family. Check the links for time, place, and the calendar, for weekly "cruisin'-ins". <http://nationwidecarshows.com/index.php?Page=cruiseins&statid=AZ&cityid=Phoenix>

CULVER'S CAR SHOW

1st & 3rd Sundays ~ 2:00 - 6:00 pm; 1842 S Greenfield Rd, Mesa; Contact Carissa 602-616-5316.

All "classic cars" welcome. All you car guys and gals cruise on out to Culver's on Greenfield! Awesome cars, great folks, good music and the best burgers and frozen custard this side of the Mississippi.

ROCK & ROLL CAR SHOW

Saturdays, 4pm - 8pm, McDonalds/Scottsdale Pavillions, 9175 E Indian Bend Rd, Scottsdale.

CRUZ'N @ PHIL'S

Every Sunday. 12:00 pm - 3:00 pm; Phil's Filling Station, Fountain Hills.

MOUNTAIN BRIDGE COMMUNITY CAR SHOW

Saturday, November 1st, 8730 East Mountain Bridge Dr, Mesa. 12-3pm. Contact Sheri Villa at 480-892-4492. Music by the Walkens Band. "Fire Up Freedom" Fire Truck with Brats, Hamburgers, Chips & Drinks, 50/50 Raffle, and lots of cool cars & trucks. <http://carshow.mountainbridgecommunity.com/>

Phoenix Car **SWAP MEET** (Nov. 22-24) at Arizona State Fairgrounds www.phoenixcarswapmet.com

LOCAL CLUB EVENTS

Dallin Petersen 5 Gary Schicketanz 12
 Duane Daley 8 Marcia Taillefer 18
 RuthAnn Elms 12 Bill Leslie 26

Happy July Birthday


GENERAL MEETING REFRESHMENTS

We meet at the Citadel on the southwest corner of Higley and Broadway in Mesa.

Please let Steve Nissle know which month you would be able to bring "light" refreshment snacks to our "General Meetings". You could also team up with another couple.

November 20 - Elms/Smiths
 December 6 - Christmas Party
 January 15 - Linneys
 February 19 - Jacksons/Poppes
 March 19 - _____
 April 16 - _____
 May 21 - _____

Be sure to wear your EVMTFC name badge at all club events.

MANIFOLD COOKER RECIPE**PEACH COBBLER on the Manifold**

*Submitted by: Mike Vaughn
 Nebraskaland Model T & Antique Car Club*

1 stick butter
 1 cup Jiffy mix
 1 cup sugar
 One 16 ounce can of peaches (do not drain)
 (You can substitute apples, blueberries etc.)

Fill bottom of cooker with crumbled foil. Add a double layer of foil and spray with Pam.
 Blend butter, sugar and jiffy mix together thoroughly and put in the cooker. Add undrained fruit.
 Put the lid on the cooker and drive for 30 miles or 45 minutes.

RECIPE OF THE MONTH**CREAMY MACARONI and FOUR CHEESE**

By: Kae Allen

This is a good recipe for the grandchildren who love Mac and Cheese but hate Squash. They'll never know it is an ingredient. It is an absolute favorite of my grandchildren. And I love the fact that I can get a vegetable into them without them knowing.

One 16-ounce box elbow macaroni
 Two 10-ounce pkgs frozen pureed winter squash
 2 cups low-fat milk
 1 1/2 cups grated extra-sharp cheddar cheese (4oz)
 2/3 cup grated Monterey Jack cheese (2oz)
 1/2 cup part-skim ricotta cheese
 1 teaspoon salt
 1 teaspoon dry mustard
 1/2 teaspoon cayenne pepper
 2 Tablespoons plain dry bread crumbs
 (I use Panko crumbs instead)
 2 Tablespoons freshly grated Parmesan cheese
 1 teaspoon olive oil
 Cooking spray

Preheat the oven to 375 degrees. Coat a 9x13 inch baking dish with cooking spray.

Cook the macaroni according to package directions. Drain and transfer to big mixing bowl.

Meanwhile, place the frozen squash and milk in a large saucepan and cook over low heat, stirring and breaking up the squash with a spoon until it's defrosted. Turn the heat up to medium and cook until the mixture is almost simmering, stirring occasionally. Remove the pan from heat and stir in the cheddar, jack cheese, ricotta, salt, mustard and cayenne. Pour mixture over macaroni, stir, and transfer to baking dish.

Combine the bread crumbs (or Panko), Parmesan and oil in a bowl. Sprinkle over top of the mac and cheese. Bake until the cheeses are bubbling around the edges, about 20 minutes, then broil for 3 minutes so the top is crisp and nicely browned.

Note: I make mine a day ahead (so the grandchildren don't see the squash packages) so it has been refrigerated, thus takes longer to bake.

MODEL T CLUB - ICE CREAM FLING

We meet the first Sunday of each month at 3:00 pm at a different ice cream parlor each month!

Sunday, November 2nd

Joe's Italian Ice
located at 2019 S McClintock Dr
(at E. Broadway Rd) in Tempe.
www.joesice.com
Yes of course, drive your T's!



Joe's Italian Ice brings Philadelphia-Style "Water Ice" to Tempe. What started as lemon ice, (now known as Water Ice) has been perfected in over fifty flavors such as Snozzberry," a mixture of lemon, apple, and blue raspberry, and "Black Beauty," which is supposed to taste like a grape SweetTart. These flavors are in addition to standard ones like lemon, lime, strawberry, and peach, of course. Joe's also offers soft serve and Dryer's ice cream in cones, cups, sundaes, shakes and floats. The signature offering at Joe's is the Joe Latti, a regular (or large) cup of your favorite flavor of Italian ice with layers of soft serve ice cream throughout and on top. The combination makes a texture that's somewhere in between a slush and sorbet. Inside Joe's, you will discover great décor in the dining area, lots of great things featuring a vintage theme to look at while enjoying your sweets.

Mark your calendar for our next "Model T Club Ice Cream Fling" on **Sunday, December 7th** at 3:00 pm. Members please suggest possible locations. It could be ice cream, Italian ice, gelato, frozen custard, paleta's, etc.

**NOVEMBER 8th—APACHE JUNCTION;
Festival of the Superstitions Car Show**

The Festival of the Superstitions Car Show is Saturday, November 8th from 9am to 2pm in Apache Junction. Parking is free.

This is a family event with an antique car show, food booths, chili cookoff, live music with country music singer Tiffany Lorraine, and a movie on the 'Backlot' featuring "Despicable Me" at 7pm.

www.festivalofthesuperstitions.com

**NOVEMBER 11th
APACHE JUNCTION
Veterans Day Parade**



Meet at 8:30 am at the NE corner of Idaho Rd. & Main/Old West Highway in Apache Junction. Bring proof of insurance. Veterans, please display your branch of service flag on your parade vehicle.

The parade starts at 9:30 am at the corner of Phelps Drive and Apache Trail with a fly-over by the Commemorative Air Force.

11:00 am A ceremony honoring Veterans Day will be at American Legion Post 27 at the corner of Meridian and Southern. There will be a moment of silence at 11:11 am, the moment the guns fell silent ending WWI. World War 1 officially ended on the 11th minute of the 11th hour of the 11th day of the 11th month, thus Veterans Day is observed on 11/11 with the moment of silence at 11:11 am.

See everyone at the parade!!!

**NOVEMBER 15th—GLENDALE
Jim Guinn's 1927 Roadster
TUNE UP & DIAGNOSIS CLINIC**

Meet at 9:00 am. Car is located at the Desert Mirage Golf Course in Glendale. (8710 W Maryland Ave). Jim's phone #: 480-516-1182

Come on out and join the club members to learn and help! Please let Tom Hoverson know if you will be attending. Jim has invited everyone who attends, bring your golf clubs, and after the clinic, everyone can play a round of golf.

**NOVEMBER 27th—FOUNTAIN HILLS
Thanksgiving Day Parade**

If you plan to participate in the Thanksgiving Day parade at Fountain Hills, please contact Steve Nissle for more information, so we can plan to meet, and they can provide adequate street space in the staging area.

Plan to arrive at 8:00 am at the Fountain in Fountain Hills. Parade begins at 9:00 am and is usually over no later than 10:30 am. This year's parade theme is "Frosty and Friends".

http://www.fountainhillschamber.com/
thanksgiving-parade.asp



**DECEMBER 6th—APACHE JUNCTION
EVMTFC Christmas Party and
AJ Holiday Program & Light Parade**

It will be snowing in Apache Junction again this year! Parks & Recreation will not only have Santa, but SNOW for the entire family to enjoy. There will be a full day of free events starting with a Walk-A-Thon, Santa, Snow, Vendor booths, and wrapping up with the annual light parade.

The EVMTFC will meet at 3:00pm at Canyon Vistas RV Resort, located at 6601 E US Hwy 60, Gold Canyon. When you enter the Canyon Vistas gate, tell the Courtesy Patrol you are with the Model T Club. They will direct you to the parking lot in front of Guest Services where we will park our T's.

We will gather for a wonderful Christmas dinner catered by Cal-Am Food Services. We will elect officers (Vice President and Treasurer) and announce the Bob Wildman Award recipient. There will be a 50/50 drawing.

After the meal, meeting and party, we will go outside to meet with Canyon Vistas residents who will be present to see our cars, to visit with club members and Model T drivers, take pictures of the lighted T's, and ask questions and share stories.

At 5:45 pm, we will line up to travel together in our own little mini parade to the AJ parade. The distance from Canyon Vistas to the parade site is only about 3-4 miles. When we leave Canyon Vistas, we will need to turn right (south) and then turn left at the crossover to go back north to Apache Junction. The second crossover is at a traffic light which might be easier.

The parade will form on Main Street just west of Idaho Road. We will enter at the parking lot of the strip mall at the Northwest corner of Idaho and Main. Those entering the parade will need to have a copy of the vehicle insurance card to give to the parade officials or one they can take a picture of. The parade begins at 7:00 pm and goes from Phelps Drive North and (Apache Trail) West to Thunderbird and back. At the end of the parade you will be allowed to turn into the Fry's gas station entrance or proceed East on Old West Highway.

Lite 'em up & drive 'em out, and we'll see you there! Bring a jacket for the cool evening and of course your camera. ***More information will be given at the November 20th meeting.** *Let Steve Nissle know if you will be attending or not.

November 4th—Election Day

Aside from club interests, we are at an extremely critical period in the history of this great country. Find out as much as you can about your candidates before Election Day and then get out and vote! Every vote is critical! We have the opportunity to get things moving in the right direction.

ELECTIONS for Vice President & Treasurer

Be thinking about the upcoming election for the positions of Vice President and Treasurer of our club. If you want to be considered for either of these positions or want to nominate someone, nominations will be taken and election finalized during the December 6th Christmas party meeting.

BOB WILDMAN AWARD

The Bob Wildman Award is the highest honor the East Valley Model T Ford Club can bestow on one of its members. Bob was a charter member of the Club. Always willing to help in any way he could at club events, he readily lent a helping hand to individual members as well, even if it was something totally unrelated to the Model T.

He loved to drive his T and participated in as many events as possible. A very giving and special person, Bob was the first deceased active member of the East Valley Model T Ford Club.

The Bob Wildman Award is given each year to the member who, in the opinion of the Award Committee which is the Board of Directors, has contributed the most of him/her self to the club.

Dave Veres was the first recipient of the Bob Wildman Award in 2011. Austin Graton was selected in 2012. Joe Fellin was chosen last year for this honor.

Nominations of a deserving candidate must be submitted to a member of the Board of Directors no later than November 30th. The award will be presented at the Christmas party.

To nominate a deserving candidate, write to the Award Committee outlining your candidate's contributions and telling why you think he or she is deserving of the award. Even if your candidate is not selected, just being nominated is an honor in itself. Nomination should be in narrative form and may include other documentation such as pictures, news articles, etc.

A MAN AND HIS T STORY

As told by: Frank Friddle, Guest Speaker at EVMTFC October 16th meeting

Frank Friddle was born in 1923. They built the 1923 Model T Ford that year, so you can always remember the year he was born. The roads in those days had very deep ruts as the road grader only came once a year. Frank was 3 years old when he drove his first car. He just held on to the steering wheel and the car stayed in the ruts. As rough as the trip would be back and forth to town, sometimes Frank would sleep in the rumble seat on the 3 ½ mile trip from town to their house. It would take an hour to go 3 ½ miles because of the ruts and getting stuck.



There was a 1924 Model T truck that had been sitting under a mulberry tree for 3 years. Frank played in it when he was little. He and his friends would drive from coast to coast on all kinds of adventures in that old truck. When Frank was 4 years old, his mother died and he went to live with his grandparents. In 1933, Frank was 10 years old. It was during the Depression and there were no jobs and no money. They decided to make the 1,100 mile trip in two junk cars from east Texas to the Mormon Temple in Arizona.

Frank bought his first 1922 Ford for \$5. When he got it home, it had a brand new tire on the right rear. He sold the tire for \$5 to his uncle, so he broke even and had the car paid for. One man went to buy his first car for \$5. On the way home, he hit a hog that ran into the road. He never made it home and his new car never run again. They also had a Roadster pickup that they took the turtle deck off and made a pickup. There were no starters in the Ts back then. If the rods were knocking in the motor, then they would tighten the rods. Frank would hang a can with a wire under his carburetor to catch the gas and then pour it back into the tank as gas was expensive, 10 cents a gallon. A couple of guys would turn the car over to get to the bottom to work on the car. One time the oil was pouring out of the motor and they lit a match to see what was leaking and it started a fire in the Bermuda grass. They dug up dirt nearby and put out the fire.

Even though Grandpa was not a mechanic, he used his carpenter skills and he and his son-in-law built a cabinet for their old Model T Truck. Chickens roosted in the mulberry trees over the truck and so you can imagine the shape this truck was in and what a job it was going to take to clean it up for the long trip.



They managed to scrounge up \$17 to begin their trip from Enoch, Texas to Phoenix, Arizona. They planned to stop along the way and pick cotton to earn money to continue their trip. Gas was 10 cents a gallon and they could earn 1 cent a pound of picked cotton. Leaving east Texas where there trees and rolling hills, they had to push the truck up the hill. They would use a fencepost that still had barbed wire attached to it, or they would back up the hill to get gas to flow to the carburetor to save gas.

They arrived at Sweetwater, Texas where his Grandma's sister lived. According to Frank, Sweetwater has the worst water he ever tasted. They had a Model T Sedan and so now 3 cars were on their way to Mesa. They made it to Myrtle, Texas and run out of money. They decided to pick cotton and earn more money so they could travel some more. In those days, cotton farmers would plant watermelon seeds with the cotton seeds. So, when Frank came upon a watermelon, he put it in his sack. At ten years old, Frank was able to pick 50 pounds of cotton. As the cotton sacks were being dumped, Grandpa found the watermelon and he thought Frank was being dishonest, so he wore out a cotton stalk on Frank.



They arrived at El Paso, Texas and they couldn't get the truck to start. They cranked and cranked for so long, they could have flown back and forth in an airplane from Arizona to Texas. They finally got it started and traveled 40 miles to Las Cruces, New Mexico going 3-4 miles an hour in low gear. They stopped again at Hila Valley to pick cotton again and earn some more money. At Coolidge Dam, the women did not want to ride across the cement dam. They were too scared. So they walked. They stayed in a dirt floor shack. Grandpa had pneumonia.

At Thatcher, they spotted wigwams and the women were scared of the Indians. They continued through Globe and Miami. They stayed all night in rock buildings that still stand today along the old highway. As you inspect the old highway you will notice that it is only 1 1/2" thick. The women walked from Miami to Superior. The kids rode in the back of truck. They arrived at the tunnel and you can still see the old paved road nearby. They went through 3 sets of brake bands coming down the mountain. They stayed at Buckhorn and could see all the lights in the valley. It was close to Christmas day when they arrived at the Temple. They discovered that everyone needed to wear white. The women used empty flour sacks to sew white clothes for the kids. They worked all night.

At Buckeye, the cotton was good and they got a good paying price. So they picked more cotton and earned more money to make the trip back home. They sold the Touring for \$12 and then headed back home to Texas with 14 people, 3 mattresses, all their clothes and cooking utensils in the truck. It took 14 days to get back to east Texas. They would stay in an autocourt for \$2.50 every Saturday night. They washed their clothes and everyone had a bath whether they needed it or not. They didn't have a single flat tire even though the roads were terrible. The only mechanical problem they had was when a part went out. So Frank walked up and down the hill to a place where they found an old engine. They removed the part and took it back, put it in the truck and were on their way again.

His son is standing with Frank's vehicles he now owns.

Frank drove the yellow pickup to the October 16th meeting.



This article was copied from the VINTAGE FORD, September/October 2014 issue.

A Model T Fuel Primer

by Joe Fellin
Apache Junction, Arizona

Having seen a number of vintage aftermarket ads for Model T fuel primers with the guarantee that they would “absolutely, positively improve cold weather starting in any Model T,” I decided it was time to test the claim by attempting to fabricate one for my Centerdoor.

After some experimenting, I fabricated just such a device which would squirt a measured 4.8 cc (about 1 teaspoon) of raw fuel directly into the intake manifold and, to my utter amazement, the contraption actually allowed the cold engine to roar to life within about 1 second of cranking rather than the normal 3 or 4 seconds and with no need to choke, at that.

Now, I hasten to add that this process works in the Arizona desert where “cold” weather starting in winter is typically down around 30 degrees and not the unconscionable winter temperatures of International Falls, Minnesota. I make no claims for those temperatures, even though the early ads promised instant starting at any temperature. What follows is a simplified description, including photos, of the device I fabricated to inject raw fuel into the intake manifold.

The first challenge was to determine some sort of injector pump which could handle gasoline. After much review of available small pumps, a small spring return air cylinder was selected as the likely candidate but not before checking to determine if the piston seal was able to handle gasoline and ethanol. A Speedaire air cylinder with 9/16" bore and 1-1/2" stroke (PN 5ZEH8) was selected. The cylinder operates by pulling the piston rod to extend the piston. Releasing the rod allows an internal spring to return the

piston to its rest position. The threaded end of the piston rod was fitted with the grip from a vintage cigarette lighter with some minor threading.

With the pump selected, it was a relatively easy matter to select two one-way check valves to allow the fuel to be drawn from an extended carburetor fuel bowl and squirted into the manifold by releasing the spring return piston. The parts selected were Clippard Minimatic Poppet Check Valves with PTFE seats (one each of parts MCV-1AB and



Exploded view of primer assembly with all components arranged in assembly position. Note extra 10-32 screw head ground to a taper for insertion within 3/16" compression fitting. View of completed primer assembly ready for installation in vehicle



Close-up view of cylinder with 1/8" fuel inlet hole ground in cylinder wall



View of completed primer assembly ready for installation in vehicle

MCV-1). The parts use a combination of 10-32 male and female threaded ends. Refer to the exploded view of parts to determine how the valves are connected to the cylinder.

In operation, the unit operates by drawing out the piston against the spring tension. This opens the inlet check valve to permit fuel to be drawn from the carb chamber into the cylinder. During this operation, the

cylinder into the now open valve leading into the manifold while the inlet valve is closed preventing fuel from being forced back into the carburetor.

In order for this two-way operation to function properly, a modification to the cylinder is required. A hole is made in the cylinder wall just behind the position where the piston is positioned at the rest position. The inlet valve is then positioned to allow fuel to flow into the cylinder thru this opening. If this were not done and both check valves were connected external to the cylinder using standard plumbing fittings, then the manifold

would be a continuous vacuum source into the carburetor fuel supply thereby drawing fuel into the manifold whenever the engine is running.

The hole is created by grinding in the thinwall stainless steel cylinder. Drilling is not practical here since the drilling force would surely cause an indentation in the wall tubing. The hole in this application is approximately 1/8 in diameter with the center of the hole approximately 1/2" from the cylinder wall end.

The next stage of this operation is to provide a means of connecting the inlet check valve to the cylinder. A 1/2" steel shaft collar is prepared by drilling and reaming for a light press fit on the cylinder



View of primer fuel chamber with top fitting soldered to chamber ready for assembling to fuel bowl in place of drain valve assembly. Side fitting is a 1/4" compression fitting soldered to chamber with nylon tubing directing fuel to primer assembly.

outlet valve is closed to prevent air from being drawn into the cylinder from the manifold. Releasing the piston rod causes the spring to force fuel from the



View of primer fuel chamber assembled to bottom of carburetor fuel bowl

outer wall. The cylinder wall measures about .61" O. D. Next, a No. 21 hole is drilled radially in the wall of the collar followed by tapping for the 10-32 fitting on the inlet check valve. When completed, the collar is secured by gently tightening the collar set screw. As an added seal, a gas proof sealant is used at to provide a leak proof connection. The sealant used in this application is a gas and oil resistant material know as Seal-All produced by the manufacturers of the well known Goop.

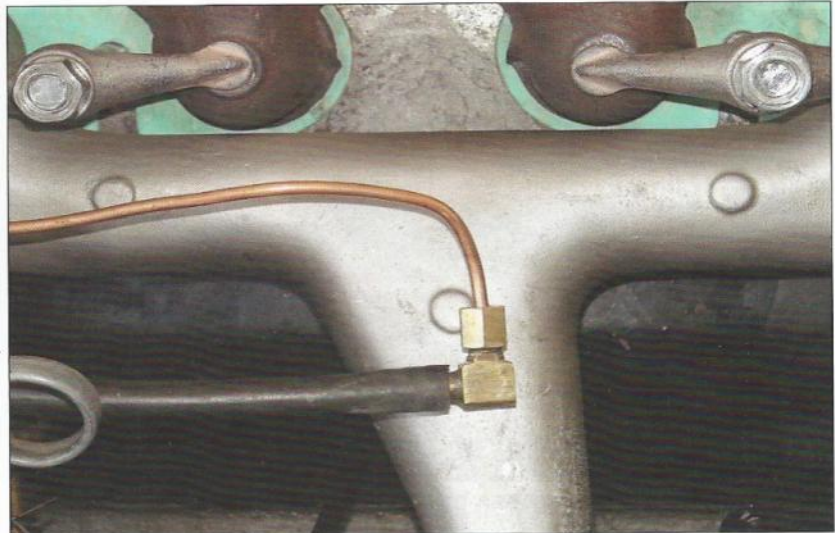
It was decided to use an organic line from the fuel supply to the carburetor rather than copper because of the well known characteristic of copper cracking which would drain the carb fuel bowl. One-fourth inch nylon tubing was selected here because of the resistance of nylon to gasoline and ethanol. Do not use ordinary hardware store flexible tubing. The outlet line was 1/8" soft copper tubing. In this area copper was felt to be acceptable since any breakage would not affect the carb fuel supply. A standard plumbing fitting with a 1/8" compression fitting for the copper line was used on one end with a threaded end on the other fitted into the manifold wall.

Since compression plumbing fittings are not available with 10-32 threads on one end, standard fittings must be adapted to fit. In this case, a 10-32 Allen head bolt 3/8" long is drilled the entire length with a 3/32" drill. The bolt head is taper ground down to connect with the 3/16" end of a 3/16" x 1/8" compression fitting.

The final operation was to create a fuel supply for the cylinder. A separate chamber was fabricated from 1-1/2" diameter copper tubing about 2" long with standard end caps soldered in place to create a separate chamber. One fitting was soldered on the side wall with a 1/4" compression fitting on one end. A separate fitting was soldered to the chamber top and also to the bottom drain valve assembly of the fuel bowl with the shutoff valve removed.

Refer to included photos for pictorial detail of fabrication.

In operation, with the timing lever set up to max retard, the throttle set at about 4-5 notches open and the ignition off, pull the piston rod to full out position



View of intake manifold with 1/8" copper tubing from primer assembly connected to a 1/8" compression fitting threaded into intake manifold



View of dashboard showing primer knob under left side of speedometer

and release. Turn ignition on and engage starter. Engine should start almost immediately. No choking is required. It is easy to determine if the cylinder is forcing fuel into the manifold as the piston will move inward rather slowly. If the cylinder is not filled with fuel, the piston will snap back into cylinder with no resistance. In the event that, the cylinder does not fill with fuel on the first pull, simply pull the piston out additional times until the piston moves back into rest position slowly. The device has been in operation continuously for almost two years with no failures or malfunctions.

Happy and Fast cold starting! ☐

This Ford Touring Car ad was submitted by Bert Diehl, Jr. See the following link.

<https://www.flickr.com/photos/thehenryford/3640770041/in/set-72157619960288772>



Ford
Touring Car
\$295

F. O. S. DETROIT
Standard and Demonstrable Blue 884 Extra

OF all the times of the year when you need a Ford car, that time is NOW!

Wherever you live—in town or country—owning a Ford car helps you to get the most out of life.

Every day without a Ford means lost hours of healthy motoring pleasure.

The Ford gives you unlimited chance to get away into new surroundings every day—a picnic supper or a cool spin in the evening to enjoy the countryside or a visit with friends.

These advantages make for greater enjoyment of life—bring you rest and relaxation at a cost so low that it will surprise you.

By stimulating good health and efficiency, owning a Ford increases your earning power.

Buy your Ford now or start weekly payments on it.

Laws They Don't Teach in Physics

Submitted by: George Elms

1.Law of Mechanical Repair - After your hands become coated with grease, your nose will begin to itch and you'll have to pee.

2.Law of Gravity - Any tool, nut, bolt, screw, when dropped, will roll to the least accessible place in the universe.

3.Law of Probability - The probability of being watched is directly proportional to the stupidity of your act.

4.Law of Random Numbers - If you dial a wrong number, you never get a busy signal; someone always answers.

5.Variation Law - If you change lines (or traffic lanes), the one you were in will always move faster than the one you are in now.

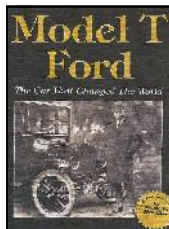
6.Law of the Bath - When the body is fully immersed in water, the telephone will ring.

7.Law of Close Encounters - The probability of meeting someone you know INCREASES dramatically when you are with someone you don't want to be seen with.

8.Law of the Result - When you try to prove to someone that a machine won't work, IT WILL!!!

CLASSIFIED ADVERTISING

FOR SALE: '26 Model T Ford Roadster Pickup. \$8,000. Runs great. Call Jerry for details. 928-635-9167.



FOR SALE: Anyone interested in the most recent printing of "The Model T Ford, The Car That Changed The World" by Bruce W. McCalley, in paperback, for \$30, please e-mail Tom Hoverson at tom1757@aol.com (Hurry! I only have 2 left).



FOR SALE: Dave Veres has a supply of EVMTFC magnetic signs to sell to our members.

-12 inches X 12 inches for \$15.

-9 inches X 9 inches for \$10.

-6 inches X 6 inches for \$6.

He also has some 4" EVMTFC patches for \$6 each. If you haven't purchased a club t-shirt yet with the EVMTFC logo, only ONE left. Large. Yellow. \$15.

CLASSIFIED ADVERTISING**FOR SALE:**

2 - 1926 front fenders

2 - 1926 rear fenders

2 - 1926 running boards

1 - set of windshield stanchions

2 - 1926 splash aprons

4 - wood 21" wheels

All of the above are original and **ARE NOT** rusted through. They will need to be reworked and have a few welded spots. Total price \$2,000 OBO. Call Gary Schicketanz at 480-268-7472.

FOR SALE: We recently moved to Scottsdale from California. Just prior to moving, I sold my early 1912 T and parts. When unpacking, I found several parts with my Model A stuff and would like to sell them. These include:

-Low Head, bead blasted, clean, painted: \$80

-Transmission puller tool (used once): \$50

-Repro Champion X spark plugs (unused), set of 4: \$50

*If anyone is interested, I can be contacted through my email at maf1930@gmail.com or phone 714-717-9321. Thanks, Dan.

FOR SALE: (See "Vintage Ford" Trading Post for this ad). 1926 Model T Roadster. Paint and body in good condition with a few nicks and scratches. Starts easily and runs good. New Rocky Mountain Brakes, rebuilt carburetor, new kingpins and bushings, new top, new front shackles and bushings. Ready to drive and enjoy. Includes rare aftermarket Rumble Seat kit, wire wheels, running board luggage rack, running board tool box, good tires. Engine # 14429763. Clear Arizona Title. Detail photos available on request. \$8,000. For further information, call Howard Downs, 480-982-2062.

FOR SALE: Contact Steve Francois at 480-946-3590 or e-mail fordgood1@yahoo.com I have a multitude of Model T and Mustang parts, too many to list. Also, Ford parts for 1952-1954. The 1953 Victoria is also still for sale.

CLASSIFIED ADVERTISING

FOR SALE:
1929 Model A
Roadster Pickup.
\$14,500.
Mint condition.



Call Dominic Vannucci at 520-490-2243.
E-mail dvannucci23@icloud.com



www.bergeford.com • Phone (480) 497-1111
460 East Auto Center Drive • Mesa, Arizona 85204-6500

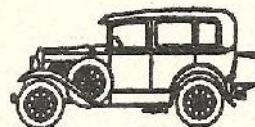
Thank you to the Citadel Senior Living for allowing us to meet at their facility... with a special thanks to Rebecca Brandon, General Manager.

The Citadel
444 South Higley Road
Mesa, AZ 85206
(480) 832-7600



ARIZONA MODEL A, L.L.C.

- NEW PARTS
- USED PARTS
- SERVICE
- RESTORATION
- HOUR: TUES-FRI 9-12, 1-5
SAT & EVES BY APPOINTMENT



SAMUEL P. GUTHRIE

15838 S. GILBERT RD., CHANDLER, AZ 85225
(480) 782-0266





FOR IMMEDIATE RELEASE

From: Model T Ford Club of America and Model T Museum

Re: **TRIPLE THE MONEY!**
Matching Grant from Wayne County Foundation (Indiana)
“Match-the-Match” from MTFCA member.

The Model T Ford Club of America and the Model T Museum (“Club”) is pleased to announce that the Wayne County Foundation, through its 2014 Challenge Match Initiative, has granted the Club a matching grant up to \$10,000, plus a chance to receive bonus bucks for over-achieving our goal. An MTFCA member (who wishes to remain anonymous) has agreed to ‘match-the-match’ up to \$20,000.

**The Matching Grant runs Monday, Nov. 10, 2014 through Friday, Nov. 21, 2014.
Donations must be received during this period to be counted!**

The Wayne County Foundation will match 1:1 donations up to \$1,000 per donor per individual and/or business. (Husbands and wives with separate accounts can each donate up to \$1,000.)

An anonymous MTFCA member will match the total of donations and Matching Grant up to \$20,000.

Donations must be received Nov. 10 thru November 21, 2014.

Donations can be made for the benefit of our Club and Museum through www.mtfca.com; through www.waynecountyfoundation.org, by check, or by calling Barbara Klehfoth at 765-855-5248 with a credit card.

Please make checks payable to Model T Ford Club of America and mail to:

Model T Ford Club of America
Match Grant
PO Box 126
Centerville, IN 47330

The Model T Ford Club of America and the Model T Museum are honored to be selected by the Wayne County Foundation to participate in this grant. Our sincere appreciation to the MTFCA member who is offering to ‘match-the-match.’ These two grants are a great show of support for the MTFCA, Model T Museum and the hobby; and a great opportunity for our Club and Museum. Please contact Barbara Klehfoth at Barbara@mtfca.com or 765-855-5248 if you have questions or need more information. Thanks for your help!

All donations are tax deductible.
