

**OFFICIAL PUBLICATION OF THE EAST VALLEY MODEL T FORD CLUB**

**March 2016**

**Volume 14, Issue 3**

**CALENDAR OF EVENTS**

**March 2016**

- 6** Ice Cream Fling 3pm  
Cold Stone Creamery  
3641 E. Baseline Rd. Gilbert
- 11** Mesa Regal Car show,  
contact the Poppes by 3/2
- 12** Tractor and early gas engine  
show / AJ fairgrounds 9 AM
- 17** Club meeting 7pm  
Citadel Community Center  
444 S Higley Rd, Mesa
- 19** Tour Shamrock Farms  
Contact Ruth Ann Elms
- 26** Happy Easter!

*Welcome to the club!  
New members...*



Joe & Colleen Davies  
1911 Torpedo



Glenn & Diane Conlon  
1927 4 door

March 17<sup>th</sup> Meeting Refreshments... Stolinski's will bring snacks and Tom H will provide drinks  
 April 21<sup>st</sup> Meeting Refreshments... Elms will bring the drinks and the Urness' will supply snacks



Also as a reminder, at the Tractor show they hold a silent auction each year where people can consign items they want to sell. I usually put a few items in the auction each year. These items need to be brought out on Friday 3/11 and any left after the auction, picked up Saturday pm 3/12. Consignor gets highest price paid less 10 percent in about 30 days.

Austin

**East Valley Model T Ford Club 2702 West Kiva Ave. Mesa, AZ 85202**  
**Website: evmtfc.com FB <https://www.facebook.com/evmtfc/?fref=nf>**

**EVMTFC (East Valley Model T Ford Club)**

**Website:** [evmtfc.com](http://evmtfc.com) Be sure to check our website often for new and updated information.

**Officers/Contact Information:**

Ken Henry, President (Board Member); 480-839-1716. [ken\\_cher@cox.net](mailto:ken_cher@cox.net)

Tom Hoverson, Vice President/Membership (Board Member); 602-292-3921. [tom1757@aol.com](mailto:tom1757@aol.com)

Bert Diehl, Secretary (Board Member); 480-325-6308. [bedeal@aol.com](mailto:bedeal@aol.com)

Dave Veres, Treasurer (Board Member); 480-897-2209. [davidveres@aol.com](mailto:davidveres@aol.com)

Steve Nissle, Immediate Past President; 480-226-6883. [stevenissle@gmail.com](mailto:stevenissle@gmail.com)

**Other Assignments:**

Dolores Stolinski, Historian; 480-986-0711. [edslim012@gmail.com](mailto:edslim012@gmail.com)

Jan Peterson, Health & Welfare/Smiley Person; 480-969-0695. [janpeterson@interwrx.com](mailto:janpeterson@interwrx.com)

Ruthann Elms, Tour Chairman; 480-831-0835. [elms1961@yahoo.com](mailto:elms1961@yahoo.com)

Steve Nissle, Newsletter Editor; 480-226-6883. [stevenissle@gmail.com](mailto:stevenissle@gmail.com)

**Membership Dues:** Dues are \$20 per year and include all family members. Please make payment by check payable to East Valley Model T Ford Club. Submit application in person at any member meeting or mail it to: David Veres, Treasurer, EVMTFC, PO Box 24502, Tempe AZ 85285.

Applications for membership in the EVMTFC may be printed from the website at [evmtfc.com](http://evmtfc.com), or obtained from any current member or from the Vice President/Membership Chairman.

**Newsletters:** We e-mail our monthly newsletter, *Runningboard News*, which also can be viewed on our website. All articles, photos and information for the upcoming newsletter is due to the Editor by the 26th of the month.

**Members Cars (Our T's):**

Steve Nissle can take a photo of your T...contact Steve if you are interested.

Dave Veres can put a photo of your T on our website. Send him a photo of your T.

**MTFCA (Model T Ford Club of America):** The EVMTFC is affiliated with, and is a chapter of, the MTFCA, a national and international organization. Membership is strongly encouraged. As a chapter of the MTFCA, at least 50% of our members must be members of the national club to keep our free liability insurance. Our club is doing very well in this regard, as almost all of our members belong to the national club.

Membership in the MTFCA includes all the privileges of the Club, including six issues of the *Vintage Ford* and one voting ballot per member-family for election of the Club's Board of Directors. Annual dues are \$40. Lifetime Memberships are available. Payment may be made by check, credit card or PayPal.

Are your MTFCA dues paid up? If your MTFCA member number is not listed on the roster, please call the President or the Treasurer with the number. The number is shown on your mailing label when you receive your *Vintage Ford* magazine.

The Model T Ford Club of America  
PO Box 126, Centerville IN 47330-0126  
Phone: 765-855-5248 Fax: 765-855-3428  
E-mail: [admin@mtfca.com](mailto:admin@mtfca.com)  
Website: [www.mtfca.com](http://www.mtfca.com)

Model T Museum  
309 N 8th St  
Richmond IN 47374



**PRESIDENT'S MESSAGE**

As February comes to a close, I reflect back on all the fun events we the EVMTC have participated in. We started the month with Motoring thru Time at the Heritage center then drove to Miami for ice cream, People outside the club asked, if that was the closest place for ice cream? Well they just don't know our club! Then, we had the car show at the Apache Junction ELKS. We closed the month with the Lost Dutchman Parade. That was the most fun event my wife and I had ever been on! That is also the longest drive for our Model T. We logged more than 60 miles. I also hear we set a record for the most cars our club has had in a parade, We had twenty cars! it was a site to see! Following the parade was the poker run, won by Mel Poppe with four sevens. Congratulations Mel!. Then, on to lunch at the Hitching Post where the owner had everything set for us to park. It was quite a site to see all of the old cars lineup in front of the old town front. It was like a picture from a 100 years ago. Joe Fellen had more cake and ice cream waiting for us at his house. It was a long fun day, Thank you Sandy and Larry for being such great hosts, coffee and donuts and organizing the poker run. Nice job. Thank you, Joe, for opening your house once again, for cake and ice cream.

We are looking for recommendation for future events. Please, have all you ideas ready for discussion at future meetings.

**Ken**



Ken and Jeff Henry had a great time at the AJROTC car show on March 13th. Ken won 1st place and Jeff took home 2<sup>nd</sup>! Congratulations!

Our New FB page is on line! Thank you Jeff Henry!

<https://www.facebook.com/evmtfc/?fref=nf>

---

---



**LOCAL CLUB EVENTS**

**ICE CREAM FLING!**

We did it again! And this time we traveled all the way to Miami! That's the one next to Globe in Arizona! We had a really super turn out! We visited Soda Pop's Old Tyme Soda parlor with its restored 1914 Soda Fountain.

Soda Pops offers tons of ice cream concoctions and in addition sells old soda machines, advertising signs and arcade items.

The street is filled with antique stores which are loaded with every imaginable old treasure from bottles to kids cars, photos to furniture. A real treat to walk the stores! A few visited an old garage on the main road that boasted some old cars and trucks.







**APACHE JUNCTION LOST DUTCHMAN DAYS PARADE! ( 20 Cars! An all time record! )**

The coffee and goodies awaited the model T members and guests as they began arriving at the Harts. There was a lot of visiting and enjoying one another before lining up to head to the parade route. 17 cars left the driveway on the way. Lots of people along the route waved and gave us greetings along the way. We arrived and found our place in line where another T was waiting. We had two more join us making a total of 20 cars which we believe to be a record. It was a huge parade and we were #52 which meant we started about 1 hour behind the first vehicles. Our newest member Glenn had a small problem. The first time he was able to get it going again, however the second time was not so good. Larry Hart had a tow rope and hooked onto him and finished the parade towing Glenn. This happened right in front of Sonic and they were able to order while the parade was going on! The crowd loved seeing the car being rescued and then proceeding down the route.

Following the parade we started our poker run. Our first stop was Bob and Susan Stone's, next Bill and Kae Allens, on to John and Lorna Jacksons, then Austin and Lynn Gratons and our last stop was Steve and Dianne Nissles. Several of the neighborhoods took the opportunity for photos of the cars and people.

We next arrived at the Hitching Post where everyone opened their envelopes to reveal their poker hands and Sandy recorded them all. We had a very nice lunch before proceeding to Joe Fellin's for dessert. Joe always puts on a great spread, thank you so much Joe. The winning hands were revealed at this time. 4th place went to Jim Thry with 3 kings and an Ace high. 3rd place was Ed Stolinski with an Ace high straight, 2nd place was Larry Hart with a Heart Flush and first place was Mel Poppe with 4 sevens. Congratulations to the winners. We then drew for door prizes and the winners were Cher Henry and Tom Hoverson.

This concluded our activities and members started their trips home. The participants in the activities included the following,

Bill and Kae Allen-1924 Roadster pickup

Tom Auterman and guest in his Model A

Glenn Colon and Guests -1927 Fordor

George and Ruthann Elms-1917 Roadster

Joe Fellin-1922 Center Door Sedan

Jack and Laraine Forsell-1925 Fordor

Austin and Lynn Graton-1925 tudor

Larry and Sandy Hart-1926 Roadster

Doug and Sammi Hart-1923 Touring

Jeff and Jan Henry-1926 Tudor

Ken and Cher Henry-1915 Roadster pickup, Cher was wearing a beautiful hat which the crowd loved. Thanks Cher

Gerald Hurysz and guests-1913 Touring

John and Lorna Jackson and guests in 1925 Touring

Steve Nissle and family-1923 Touring

Mel and Lorie Poppe-1926 Touring

Ed and Dolores stolinski-1914 Paddy Wagon

Bob and Susan Stone and guests-1925 Touring

Jim and Barb Thyr-1928 Model A

Dave Veres and Tom Hoverson-1929 Model A Tudor

J Walker-1925 Speedster

Thank you to everyone the participated and made this an event worth attending. We missed those of you that were unable to attend and hope you will make plans to join us next year!

---

---



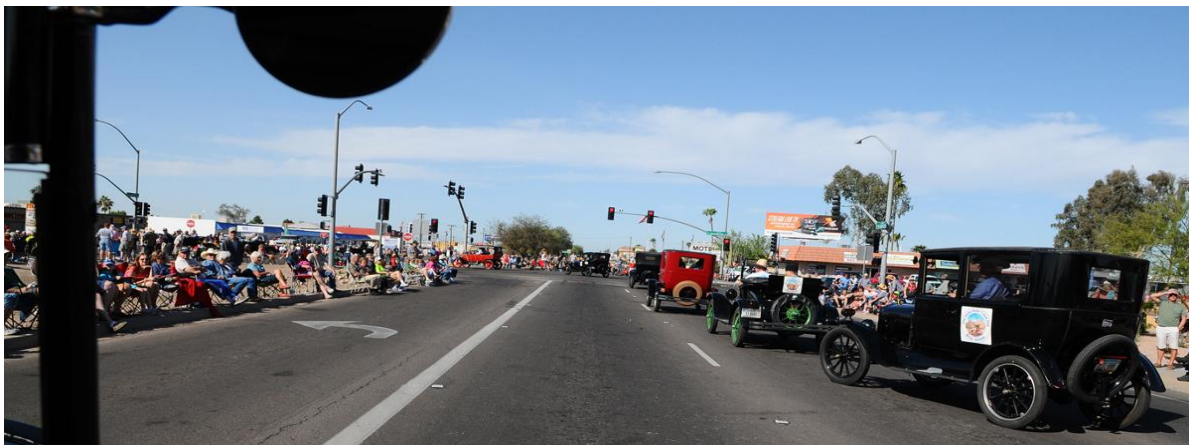
APACHE JUNCTION LOST DUTCHMAN DAYS PARADE! ( 20 Cars! An all time record! )

















Elks Lodge Car Show and Brat Party.

I arrived at about 10:20 am to find four cars already there including Glenn and Diane Colon in their 1927 red Four door and Pat and Richard Edmunson in their 1925 Roadster pickup. This was my maiden voyage in my 1925 Chevrolet roadster pickup since restoring and installing the fenders, splash aprons and running boards. Soon after my arrival, Jack Forsell pulled up in his Four door. Ed and Dolores Stolinski were the next to arrive in their Paddy Wagon. At around this time Jim and Barb Thyr also arrived in their Model A. Ed thought J. Walker was tied up for the day taking delivery of some furniture, but he soon arrived in his 1925 Speedster. George Elms pulled in with his Model A roadster just before the first brats were served. The cars lined up included four Model A's, four Model T's and a Chevrolet.



For Sale: NOS (Ford) 17-25 Roadster/Touring Right Rear Fender \$275,  
 Four 440/450-21 B F Goodrich Tires – in good condition and 1 inner tube \$200,  
 Five 21 inch “T” wire wheels, 2 front hubs and 2 rear hubs \$600,  
 Ruckstell Axle (small hub) – call for more details.  
 Contact Bob at [928-474-0908](tel:928-474-0908).



Heh!  
 Need some help with your T? Let us know and we'll schedule a clinic for you!  
 Ken Henry  
 480-839-1716

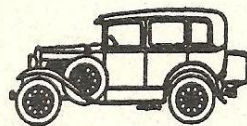
**On Feb. 10th** ...Dave Veres and Ken Henry visited Dobson High School to show our cars. We were invited by Misty Willis the US History teacher. Dave drove his 1928 Model A and Ken drove his 1915 Model T. They are studying Henry Fords first assembly line. This is the second year Dave and I have spent the day telling high school students about the Model T Ford. Most students had never seen cars this old and certainly not a 101 year old car. Misty had four classes this day and rotated about 6 students at a time to look at our cars. We tried to tell them as much as we could about the Model T and Model A. Some had good questions and others just wanted to take pictures. All in all it was a good day!



**FOR SALE:** Dave Veres has a supply of EVMTFC magnetic signs to sell to our members. 12 inches X 12 inches for \$15; 9 inches X 9 inches for \$10; 6 inches X 6 inches for \$6. He also has 4" EVMTFC patches for \$6 each. Only one club t-shirt left with the EVMTFC logo, Large. Yellow. \$15. Contact Dave at 480-897-2209. [davidveres@aol.com](mailto:davidveres@aol.com)

**ARIZONA MODEL A, L.L.C.**

- NEW PARTS
- USED PARTS
- SERVICE
- RESTORATION
- HOUR: TUES-FRI 9-12, 1-5
- SAT & EVES BY APPOINTMENT



SAMUEL P. GUTHRIE

15838 S. GILBERT RD., CHANDLER, AZ 85225  
 (480) 782-0266

**BERGE FORD**   
 "We Take Care Of Our Neighbors."



www.bergeford.com • Phone (480) 497-1111  
 460 East Auto Center Drive • Mesa, Arizona 85204-6500

Thank you to the Citadel Senior Living for allowing us to meet at their facility... with a special thanks to Rebecca Dice, General Manager.

**The Citadel**  
 444 South Higley Rd  
 Mesa AZ 85206  
 (480) 832-7600

