

Runningboard



News

OFFICIAL PUBLICATION OF THE EAST VALLEY MODEL T FORD CLUB

November 2017

Volume 15, Issue 7

East Valley Model T Ford Club
2702 West Kiva Ave. Mesa, AZ
85202

Website: evmtfc.com
FB

[https://www.facebook.com/evmtfc/
?fref=nf](https://www.facebook.com/evmtfc/?fref=nf)



The American Magazine

97

Ford

TUDOR
\$520
F.O.B. DETROIT



*The Planetary Transmission Costs More to Build
But Gives Better Light Car Control*

THE planetary transmission was developed as the simplest, most direct and reliable means of speed control for light cars. While this type costs more to build, its advantages far outweigh other considerations. Your car is more flexible in traffic—with starts, stops and speed changes made faster and more easily. Complete control through foot pedals makes it unnecessary

to remove your hands from the wheel. Gears are constantly in mesh, preventing the possibility of stripping. The transmission, therefore, stands harder abuse; there are no costly replacements. Ford economy methods alone make it possible to build this superior transmission into Ford cars, yet keep Ford prices the lowest ever offered. FORD MOTOR COMPANY, Detroit, Michigan

RUNABOUT \$299. TOURING \$310. COUPE \$500. TUDOR SEDAN \$510. FORDOR SEDAN \$565
All Prices f. o. b. Detroit

EVMTFC (East Valley Model T Ford Club)

Website: evmtfc.com Be sure to check our website often for new and updated information.

**Officers/Contact Information:**

Ken Henry, President (Board Member); 480-839-1716. ken_cher@cox.net
Tom Hoverson, Vice President/Membership (Board Member); 602-292-3921. tom1757@aol.com
Bert Diehl, Secretary (Board Member); 480-325-6308. bedeal@aol.com
Dave Veres, Treasurer (Board Member); 480-897-2209. davidveres@aol.com
Steve Nissle, Immediate Past President; 480-226-6883. stevenissle@gmail.com

Other Assignments:

Historian;

Jan Peterson, Health & Welfare/Smiley Person; 480-969-0695. janpeterson@interwrx.com
Ruthann Elms, Tour Chairman; 480-831-0835. elms1961@yahoo.com
Steve Nissle, Newsletter Editor; 480-226-6883. stevenissle@gmail.com
Jeff Henry, Web Master; (480) 888-6349. jhenry123_321@yahoo.com

Membership Dues: Dues are \$20 per year and include all family members. Please make payment by check payable to East Valley Model T Ford Club. Submit application in person at any member meeting or mail it to: David Veres, Treasurer, EVMTFC, PO Box 24502, Tempe AZ 85285.

Applications for membership in the EVMTFC may be printed from the website at evmtfc.com, or obtained from any current member or from the Vice President/Membership Chairman.

Newsletters: We e-mail our monthly newsletter, *Runningboard News*, which also can be viewed on our website. All articles, photos and information for the upcoming newsletter is due to the Editor by the 26th of the month.

Members Cars (Our T's):

Steve Nissle can take a photo of your T...contact Steve if you are interested.

Dave Veres can put a photo of your T on our website. Send him a photo of your T.

MTFCA (Model T Ford Club of America): The EVMTFC is affiliated with, and is a chapter of, the MTFCA, a national and international organization. Membership is strongly encouraged. As a chapter of the MTFCA, at least 50% of our members must be members of the national club to keep our free liability insurance. Our club is doing very well in this regard, as almost all of our members belong to the national club.

Membership in the MTFCA includes all the privileges of the Club, including six issues of the *Vintage Ford* and one voting ballot per member-family for election of the Club's Board of Directors. Annual dues are \$40. Lifetime Memberships are available. Payment may be made by check, credit card or PayPal.

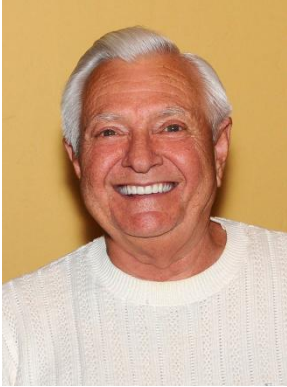
Are your MTFCA dues paid up? If your MTFCA member number is not listed on the roster, please call the President or the Treasurer with the number. The number is shown on your mailing label when you receive your *Vintage Ford* magazine.

The Model T Ford Club of America
PO Box 126, Centerville IN 47330-0126
Phone: 765-855-5248 Fax: 765-855-3428
E-mail: admin@mtfca.com
Website: www.mtfca.com

Model T Museum
309 N 8th St
Richmond IN 47374



PRESIDENT'S MESSAGE



It's starting to feel like fall and our winter visitors are starting to flow into the valley. What a great time to be in the Valley! Let's get those Model T's out, gassed up and on the road. What a great time we had at Usery Mountain Park. It was our annual picnic. The weather was perfect, although it was a little warm on the drive home. We even picked up a new member to our club. Welcome John and Amanda Suprock. Thank you everyone for making this a great day. As usual, everyone pitched with delicious food and drinks.

Everyone, get prepared, as we have planned a fun packed winter, so stay tuned, get to our monthly meetings and get involved.

Ken

Ice Cream location for **November 5th** will be at, Freddy's Frozen Custard & Steaks, located at [6846 E. Hampton Ave. Mesa AZ](#). We will meet at 2:00pm. They are located just east of Power Road and E. Hampton.

Check our Web Site for directions.

Nov. 11th- Veteran's Day Parade, Down Town Mesa (I have already signed us up)

Dec. 2nd- Apache Junction Light Parade

Feb. 25th- AJ Lost Dutchman Days Parade

Mar. 12th- Tractor and Early Gas Engine Show AJ Fair Grounds

At this year's Christmas party we will need to elect a new President and Secretary, as Bert and my time will be up. So start thinking of our replacements. Remember, to contact the person you are to nominate in advance, you need to know, if nominated, that they will take the position.

Finally, do we have any recommendations for the Bob Wildman award? The process and requirements are listed on our Web Site.

CALENDAR OF EVENTS

2017 - 2018

Nov. 5th 2pm Ice Cream Fling-Freddy's
6846 E. Hampton Ave. Mesa AZ

Nov. 11th- Veteran's Day Parade, Down Town Mesa

Dec. 2nd- Apache Junction Light Parade

Feb. 25th- AJ Lost Dutchman Days Parade

Mar. 12th- Tractor and Early Gas Engine Show AJ

November **16th** General Meeting 7:00 pm,
Citadel Community Center,
444 S Higley Rd, Mesa
(SW corner Broadway & Higley)

Happy Birthday!

November

8 Duane Daley

12 Dary Schnicketanz

12 Ruthann Elms

18 Marcia Teillefer

26 Bill Leslie

**Congratulations Steve & Dianne Nissle
40th wedding anniversary October 21st!**



Usery Park Saturday October 28th!

Wow what an awesome time we had! It's great to see our winter club members returning!





Check out our Facebook page for the video!

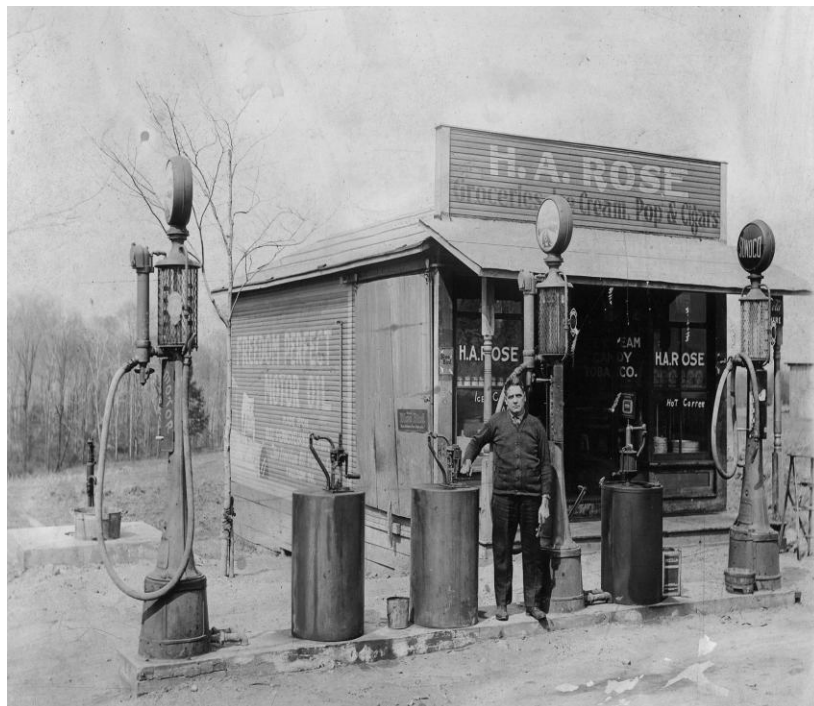
www.facebook.com/search/str/east+valley+model+t+ford+club/keywords_blended_featured_posts?esd=eyJlc2lkIjoUzpfSTMyNDUwODczMTAwNjg1MjpwSzo2MTE4MTc4NzU2MDkyNjgiLCJwc2lkIjp7IjMyNDUwODczMTAwNjg1MjpwSzo2MTE4MTc4NzU2MDkyNjgiOiJVenBmU1RNeU5EVXdPRGN6TVRBRd05qZzFNanBXU3pvMk1URTRNVGM0TnpVMk1Ea3lOamc9In0sImNyY3QiOiJ0ZXh0IiwieY3NpZCI6ImFhZWYxOWMxODg0NjczMWVjYjA2ZDAzZjA0MzkyZmNkIn0%3D





THE GENERAL STORE

Stuff for sale or trade.
Submit your ads to Steve Nissle stevenissle@gmail.com
Ads will be run for 3 months unless cancelled.





Newsletter Notes...

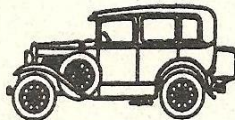
Next newsletter
 December 2017...please send
 your Summer photos, articles,
 recipes and "cool stuff" to Steve
 Nissle stevenissle@gmail.com
 ... Deadline November 27th

**NEED HELP WITH
YOUR T?**

Contact Ken Henry and we'll
 set up a clinic!

ARIZONA MODEL A, L.L.C.

- NEW PARTS
- USED PARTS
- SERVICE
- RESTORATION
- HOUR: TUES-FRI 9-12, 1-5
- SAT & EVES BY APPOINTMENT



SAMUEL P. GUTHRIE

15838 S. GILBERT RD., CHANDLER, AZ 85225
 (480) 782-0266



"We Take Care Of Our Neighbors."



www.bergeford.com • Phone (480) 497-1111
 460 East Auto Center Drive • Mesa, Arizona 85204-6500

Thank you to the Citadel Senior Living for
 allowing us to meet at their facility...

The Citadel
 444 South Higley R
 Mesa AZ 85206
 (480) 832-7600

