

*Runningboard*



*News*

**OFFICIAL PUBLICATION OF THE EAST VALLEY MODEL T FORD CLUB**

**December 2017**

**Volume 15, Issue 8**



**East Valley Model T Ford Club  
2702 West Kiva Ave. Mesa, AZ  
85202**

**Website: [evmtfc.com](http://evmtfc.com)**

**FB**

**[https://www.facebook.com/evmtfc/  
?fref=nf](https://www.facebook.com/evmtfc/?fref=nf)**



**EVMTFC (East Valley Model T Ford Club)**

**Website:** [evmtfc.com](http://evmtfc.com) Be sure to check our website often for new and updated information.

**Officers/Contact Information:**

Ken Henry, President (Board Member); 480-839-1716. [ken\\_cher@cox.net](mailto:ken_cher@cox.net)  
Tom Hoverson, Vice President/Membership (Board Member); 602-292-3921. [tom1757@aol.com](mailto:tom1757@aol.com)  
Bert Diehl, Secretary (Board Member); 480-325-6308. [bedeal@aol.com](mailto:bedeal@aol.com)  
Dave Veres, Treasurer (Board Member); 480-897-2209. [davidveres@aol.com](mailto:davidveres@aol.com)  
Steve Nissle, Immediate Past President; 480-226-6883. [stevenissle@gmail.com](mailto:stevenissle@gmail.com)

**Other Assignments:**

Historian;

Jan Peterson, Health & Welfare/Smiley Person; 480-969-0695. [janpeterson@interwrx.com](mailto:janpeterson@interwrx.com)  
Ruthann Elms, Tour Chairman; 480-831-0835. [elms1961@yahoo.com](mailto:elms1961@yahoo.com)  
Steve Nissle, Newsletter Editor; 480-226-6883. [stevenissle@gmail.com](mailto:stevenissle@gmail.com)  
Jeff Henry, Web Master; (480) 888-6349. [jhenry123\\_321@yahoo.com](mailto:jhenry123_321@yahoo.com)

**Membership Dues:** Dues are \$20 per year and include all family members. Please make payment by check payable to East Valley Model T Ford Club. Submit application in person at any member meeting or mail it to: David Veres, Treasurer, EVMTFC, PO Box 24502, Tempe AZ 85285.

Applications for membership in the EVMTFC may be printed from the website at [evmtfc.com](http://evmtfc.com), or obtained from any current member or from the Vice President/Membership Chairman.

**Newsletters:** We e-mail our monthly newsletter, *Runningboard News*, which also can be viewed on our website. All articles, photos and information for the upcoming newsletter is due to the Editor by the 26th of the month.

**Members Cars (Our T's):**

Steve Nissle can take a photo of your T...contact Steve if you are interested.

Dave Veres can put a photo of your T on our website. Send him a photo of your T.

**MTFCA (Model T Ford Club of America):** The EVMTFC is affiliated with, and is a chapter of, the MTFCA, a national and international organization. Membership is strongly encouraged. As a chapter of the MTFCA, at least 50% of our members must be members of the national club to keep our free liability insurance. Our club is doing very well in this regard, as almost all of our members belong to the national club.

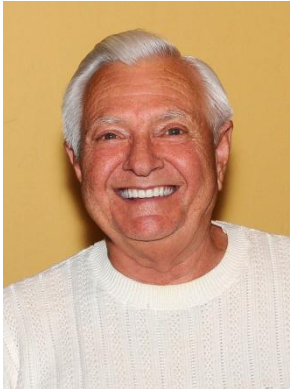
Membership in the MTFCA includes all the privileges of the Club, including six issues of the *Vintage Ford* and one voting ballot per member-family for election of the Club's Board of Directors. Annual dues are \$40. Lifetime Memberships are available. Payment may be made by check, credit card or PayPal.

Are your MTFCA dues paid up? If your MTFCA member number is not listed on the roster, please call the President or the Treasurer with the number. The number is shown on your mailing label when you receive your *Vintage Ford* magazine.

The Model T Ford Club of America  
PO Box 126, Centerville IN 47330-0126  
Phone: 765-855-5248 Fax: 765-855-3428  
E-mail: [admin@mtfca.com](mailto:admin@mtfca.com)  
Website: [www.mtfca.com](http://www.mtfca.com)

Model T Museum  
309 N 8th St  
Richmond IN 47374



**PRESIDENT'S MESSAGE**

Do you believe it is almost December? Where has this year gone. I hope it has been a very good year for all of you. I think I see a break in the weather, not as hot anyway. This is the time of year our club fills to its full attendance. More and more of our winter friends trickle into town. The diversity of our members it what makes this club the best I have been in.

As I was decorating my car for the Light Parade, I had a big smile, what a joyous time of year we are entering into. I look forward to all of the activities we have planned and the friendship each event brings. We have one of those feel good moments coming up, with the Toys For Tots donations. This is such a good idea, I don't know why we didn't do it earlier. Thank you, Bob Stone, for bringing this idea to the club. Yes, I have already bought my gifts for the donation. Believe it or not, I have all of my Christmas shopping done.

We have had a wonderful year in the East Valley Model T Club! I want to thank everyone that helped plan our events and tours. A Special thanks to RuthAnn Elms, for all of her effort, to make all of these events happen. I wish all of you and your family a very Merry Christmas and thank you, for making this an easy year for me.

Ken

---

---

**EVMTFCA Christmas Party December 8th**

Friday, December 8<sup>th</sup> is the date for the club Christmas Party. It will be held at the Wells Club House at [5735 E McDowell Rd](#) in Mesa. Cost was set at \$14 per person.. Please arrive no later than 5:30 PM for dinner. Dinner will be catered by the Midwest Meats Restaurant. Club volunteers will serve the meal which will feature ham or turkey, mashed Potatoes, stuffing, a vegetable, and dessert. Thank you, Austin Graton for organizing the catered dinner. A motion (Bob Stone) was made to replace the typical handing of gifts, based on raffle tickets, with a donation of toys to Toys for Tots. Each club member attending the Christmas Party is asked to bring an unwrapped toy worth \$10-15 with them to the party. The motion was approved and Bob Stone will contact the Marine Corps Reserve, to make arrangements to pick up the toys

---

---

Ladies Tea Saturday January 20<sup>th</sup>  
Be prepared to tell about your favorite family meal or favorite recipe

---

---



Get those Model T's all decorated up, its time for the light Parade!

On **December 2<sup>nd</sup>** the club will participate in the Apache Junction Light Parade. Plan to meet at Kae and Bill Allen's [960 S. Wickiup Rd. Apache Junction, 85119](#) for a pot luck meal at **3:30 PM**. The parade begins at **7 PM** (We should be in place, lined up by **6:30pm**). Everyone is invited back to Allen's following the parade for refreshments. Kae, says the potluck is for everyone, even if you are not planning to drive in the parade. There may be some open seats for riders, or just hang out till everyone gets back. Everyone, remember to have a copy of your registration and insurance for review. We will be returning to the Allen's for hot toddies afterwards. As of today's forecast, Sat's. weather will be 80 degrees and partly sunny. Sounds good. You can find the parade map on the EVMTFC web site. A special thanks to Bill and Kae for opening their home for us.

We will be staging at the same spot as last year (NW corner of Idaho & Old West). Horse entries will go after motorized entries. Yea, we don't have to dodge the poop! The route will be the same as last year, heading West on Old West, turning around at Thunderbird, and **exiting on Idaho Road. (This part is different from last year)**. The itinerary of the Holiday Event have changed from last year necessitating this change.

At this year's Christmas party we will need to elect a new President and Secretary, as Bert and my time will be up. So start thinking of our replacements. Remember, to contact the person you are to nominate in advance, you need to know, if nominated, that they will take the position.

---

**Ice Cream Fling** location for **December 10<sup>th</sup>** (**NOTE NOT DECEMBER 3<sup>RD</sup>**) will be at, Culvers, located on Sossaman south of Southern.. We will meet at 2:00pm.

As you know, Our Christmas Party is on **Dec. 8th**. Everyone is bringing gifts, for our Toys For Tots donation, to the party. If we have our ice Cream Fling on the 10th, we could do a photo op. with our cars as a backdrop, handing over the gifts. I will make arrangements for someone to pick up the toys at Culvers around **3:00pm**)

---

Bob Stone writes...

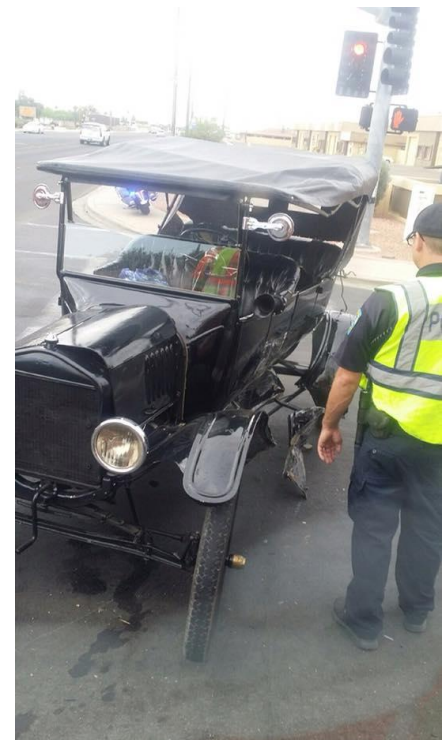
Our First Baptist Church in Camdenton, Missouri has "Trunk or Treat every Halloween. This year it was estimated that we handed out over 1,000 pounds of treats to 2,500 - 3,000 children. That's pretty good since the town's population is only 3,200 folks. We are in a resort community with numeruos small towns ringing the Lake of the Ozarks. There were families that brought their kids from Lebanon, 35 miles away. It is a good outreach to spread the Love of God. Most of the kids recognized "Lizzie" from Cars Movie.



Sunday November 5<sup>th</sup> on his way to the Ice Cream Fling Steve Nissle was involved in a accident. It happened on Superstition (University) and Ironwood in Apache Junction. Steve was driving west bound 35 mph on Superstition when an east bound Jeep Cherokee turned North and hit the drivers side of Steve's 1923 Touring. Steve was ambulated to Mountain Vista Hospital where he had some stitches and cuts and bruises patched up. The 23 T wasn't that lucky....currently Steve is waiting for the other drivers insurance to settle.

How blessed with just minor cuts and bruises! It could have been way worse.

Steve Nissle is looking for drivers side front and rear fenders, running board, splash apron, running board brackets and a rear end for his 23 touring.



SATURDAY NOVEMBER 18, 2017 *Arizona Railway Museum Tour*

Visit our Facebook page for video and photos! <https://www.facebook.com/evmtfc/>

We all met at Serrano's Mexican Restaurant in Chandler for lunch (I didn't get the exact headcount but there were about 30 members and about 10 Model T's.). After a delicious meal, we followed each other a little further south to the Arizona Railway Museum at [330 E. Ryan Road](#). The City of Chandler has provided them a home, first at Armstrong Park until 2007 and from 2007 to present at Tumbleweed Park.

This is their Mission Statement: To acquire, preserve, restore and display railroad artifacts and equipment with primary focus on Arizona and the Southwest. (Just like our club, to acquire, reserve and restore Model T Fords).

The Museum was founded and incorporated in 1983 as a non-profit, educational and historical organization. They have over 225 members throughout the United States.

We had a guided tour, and what fun it was to walk thru the restored cars. There were dining cars with displays of the china used; sleeper berths, smoking cars, even a car that held horses. One of the cars was over 100 years old. We were able to climb aboard a Steam locomotive engine. Our guide took a group photo in front of this engine.

There is a gift shop where many things pertaining to trains were on sale. I even purchased a book of modern day trains for my Grandson. I was texting him photos of the trains to which he texted back "I LUV Trains!!

Thank you to Ruth Ann for making all these arrangements. It was a delightful day. Roselynn Urness

.....

It was a beautiful fall Arizona morning, the kind that so many have come here for. We were set to meet at Serrano's Fine Mexican Food Restaurant, a Chandler staple since 1979, Saturday November 18 at 11 AM. Being any too early would do no good since they do not open the doors until then. We started trickling in around 10:30, giving us some extra time to reminisce since so many have been away for the summer. At 11 we were let in and filled our assigned long table and then some, what a good turnout. We must have had 30 for lunch. As usual it took some time to get everyone served but that was not a problem because we had an hour and a half until our Railroad Museum tour started. After we all enjoyed our fill we caravanned a couple miles south to Ryan Road where the Arizona Railway Museum came into sight. We had about 7 T's to show off in their gravel parking lot. The last time I had been here must have been over 10 years ago because it was when they were uptown Chandler and only had 3 railway cars open. This time was very different. Access was easy and led us into their museum shop. For a nominal fee of \$5 we were gathered to the central seating area with memorabilia and 2 long oak benches that were used in a train station. Our tour guide, a middle aged friendly man, began to tell us about the museum. How it had moved some 10 years ago to its current location on city land in an area called Tumbleweed Park. It seems to be run by volunteers from their membership that was over 150 strong. And strong at least some of them must be since they have done much of the renovations and maintenance of these cars. We were able to tour as follows 1906 steam locomotive, 2 business cars, a smoking car, a dining car, observation car and caboose (you knew that was coming). All had their histories well documented because safety for these behemoths of the rail could only be maintained with in-depth records. After an hour or so of going up and down all those stairs we felt that we had gotten our moneys worth. Thanks to Ruthann Elms for coordinating this event. For more information on the museum get on line at <http://www.azrymuseum.org> Tom Hoverson

**Veteran's Parade Friday November 10<sup>th</sup> Mesa** Visit our Facebook page for video and photos!

<https://www.facebook.com/evmtfc/>

COULD IT BE .....!

While waiting in the parking lot at Basha's where we were to assemble before traveling to the parade lineup, a Model T appeared which I didn't immediately recognize. The car was a Tudor painted flat black. When the car approached closer, I recognized the driver as one Tom Hoverson. He was actually driving his car, which had not been seen at an event for several years. To top it off, he also drove his T to the Railroad Museum the following Saturday. Congratulations Tom!! Now to replace that pesky battery! Thanks, Austin

Sunday November 5<sup>th</sup> Freddy's Frozen Custard (Ice Cream Fling)





**THE GENERAL STORE**

Stuff for sale or trade.

Submit your ads to Steve Nissle  
stevenissle@gmail.com

Ads will be run for 3 months unless cancelled.

**CALENDAR OF EVENTS**

Dec. 2nd- Pot Luck & Apache Junction Light Parade  
See info in Newsletter

Dec. 8th pm EVMTFCA Christmas Party

Dec. 10th 2pm Ice Cream Fling Culvers/Sosseman S of  
Southern

No December General Meeting  
Because of Christmas party

Next Meeting

January 18, 2018 @ 7:00 pm - 9:00 pm  
Citadel Community Center,  
444 S Higley Rd, Mesa  
(SW corner Broadway & Higley)

***Happy Birthday!***

December

- 5 Mel Poppe
- 14 Claudia Linney
- 16 Steve Francois



### General meeting November 16<sup>th</sup> 2017

The meeting was called to order at 7:07pm. We welcomed our guest and new member Mark Manzi. Mark and Maria have a 1927 Model T and live in Gold Canyon. The Pledge of Allegiance was followed by the presentation of the club " Trouble Trophy" to Steve Nissle. Steve, was driving his Touring T to the club ice cream fling on Sunday November 2<sup>nd</sup> when he was hit in an intersection by a Jeep making a turn. The T received extensive damage and Steve required a trip to the emergency room for 10 stitches, to close a wound on his forehead. Secretary, Bert Diehl read the minutes from the October meeting. The minutes were approved, with a correction to cabin cost. The Dead Horse Ranch, outing scheduled for March 23, 2018, will cost club members \$125 and not \$175 for the weekend. There was a motion from the floor, to no longer read the minutes from the last month meeting at the current meeting. After a brief discussion, it was agreed that the Secretary will take the notes and send to the President, for distribution to all club members, via an email. Treasurer, Dave Veres reported activity in the club treasury with income from the renewal of dues for 2018 and 50/50 raffle. Expenses included costs for the picnic at Utery Park and participation in the Mesa Veterans Day Parade. The treasury report was approved as presented. VP Tom Hoverson reported, that in addition to new member Mark Manzi, we also had a new members, by the name of John and Amanda Surock. John joined the club while attending our outing at Utery Mountain Park. They were not at the General Meeting. Steve Nissle asked that club members provide him with photos from our tours, recipes to share, items of interest, etc. Tom Hoverson offered to write an article on the upcoming Train Museum tour and Ken Henry volunteered to produce an article on the Mesa Veterans Day Parade. Note: Roselynn has written an article from our Train Museum Tour and Austin has offered to write an article for the Vererans Day Parade. Thank you Roselynn and Austin. Jan Peterson, passed out dash plaques prior to the meeting and reported sending a card to Steve Nissle. Ken asked that a get well card, be sent to Dave McAlpin, who has recently undergone a heart valve replacement. The focus of meeting turned to tours, beginning with the November 18 visit to Serranoes, on Arizona Ave. in Chandler, at 11am for lunch. Followed by a visit to the Arizona Railway Museum on Ryan Rd in Chandler. On December 2<sup>nd</sup> the club will participate in the Apache Junction Light Parade. Plan to meet at Kae and Bill Allen's for a pot luck meal at 3:30 PM. The parade begins at 7 PM and everyone is invited back to Allen's following the parade. Sunday, December 5<sup>th</sup> at 2 PM the club will attend the monthly Ice Cream Fling at the Culvers, located on Sossaman south of Southern. Friday, December 8<sup>th</sup> is the date for the club Christmas Party. It will be held at the Wells Club House at [5735 E McDowell Rd](#) in Mesa. Cost was set at \$14 per person. Ken will send an email requesting an RSVP so an accurate head count can be established. Volunteers will arrive at 4:30 PM to set up tables, etc. Please arrive no later than 5:30 PM for dinner. Dinner will be catered by the Midwest Meats Restaurant. Club volunteers will serve the meal which will feature ham or turkey, mashed Potatoes, stuffing, a vegetable, and dessert. Thank you, Austin Graton for organizing the catered dinner. Roselynn Urness, reported that she has purchased table clothes and some decorations. Ken and Cheryl Henry will provide plates and silverware. Everyone is to collect cost, for reimbursement by the club. A motion (Bob Stone) was made to replace the typical handing of gifts, based on raffle tickets, with a donation of toys to Toys for Tots. Each club member attending the Christmas Party is asked to bring an unwrapped toy worth \$10-15 with them to the party. The motion was approved and Bob Stone will contact the Marine Corps Reserve, to make arrangements to pick up the toys. After dinner a brief business meeting will be held to elect a President and Secretary for 2018-2019 and present the Bob Wildman award for 2017. Nominations can be submitted to any of the club board member and need to be in by November 30th. Following the business meeting, entertainment will be provided. The party will end no later than 9 PM and members are asked to help with cleanup of the facility. Activities for the month of January 2018 were discussed. Since the Christmas party will be last event of 2017 and members will not meet as a group again, until the general meeting on Thursday, January 18. An Ice Cream Fling will be held at 2 PM on Sunday, 1/7. Superstition Farms was suggested as a potential location. Ken will attempt to set up a visit to the Pollack Museum on 1/13. The General Meeting will be held on Thursday 1/18. Ladies Tea will be held at the Hart's on 1/20. Watch for more details in Running Board News and Ken's emails. Members took a break at 8:08 PM for refreshments. Thank you Joe Fellin and Steve and Marilyn Francois for the snacks. During the break the treasurer collected membership dues for 2018, member payment for attending the Christmas Party and Dead Horse Ranch payments. The meeting was reconvened 8:45 PM. Janice Smith, donated a scale Model T model that was auctioned off and won by Dave Veres, with a winning bid of \$30. Ed Stolinski, donated 3 dash plaques that were auctioned off to three club members for \$6 each. Ed Stolinski, was also the proud winner of a plaque, proclaiming his Model T paddy wagon, as the People's Choice, at a car show in AJ. Congratulations Ed. The 50/50 raffle netted the winning ticket holder (Cher Henry) \$19. Woohoo!! Austin Graton, finished the evening with a Photo presentation, of a private collection of horse drawn vehicles located in northern New Hampshire. The collection includes lots of Gypsy wagons, carts, firefighting equipment, sleights, etc., plus signs and other collectibles. Very interesting Austin. Thank you. The meeting was adjourned at 9:10 PM. Thank you Bert for the fine meeting minutes.

---

---

## General meeting snack list

January

Davies, Joe & Colleen  
Forsell, Jack & Laraine  
Urness, Reginald & Roselynn

February

Poppe, Mel & Lorie  
Jackson, John & Lorna  
Auterman, Thomas & Joan

March

Stolinski, Ed  
Stone, Bob & Susan  
Thyr, Jim & Barbra  
Edmunson, Richard & Pat

April

Linney, Steve & Claudia  
Graton, Austin & Lynn  
Nissle, Steve & Dianne

May

Henry, Ken & Cheryl  
Henry, Jeff & Jan

June, July, August No meetings

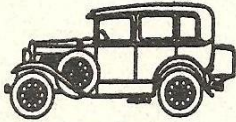
I would recommend someone in the each group take charge and coordinate with the others on what to bring (maybe the first person on the list is the coordinator).

Let me know if I have missed anyone. I know there may be a month you will not be available, just let me know and we will make an adjustment.

Ken Henry

**ARIZONA MODEL A, L.L.C.**

- NEW PARTS
- USED PARTS
- SERVICE
- RESTORATION
- HOUR: TUES-FRI 9-12, 1-5
- SAT & EVES BY APPOINTMENT



**SAMUEL P. GUTHRIE**

---

15838 S. GILBERT RD., CHANDLER, AZ 85225  
(480) 782-0266

**BERGE FORD** 

*"We Take Care Of Our Neighbors."*



www.bergeford.com • Phone (480) 497-1111  
460 East Auto Center Drive • Mesa, Arizona 85204-6500

Thank you to the Citadel Senior Living for allowing us to meet at their facility...

**The Citadel**  
444 South Higley R  
Mesa AZ 85206  
(480) 832-7600

