



OFFICIAL PUBLICATION OF THE EAST VALLEY MODEL T FORD CLUB

~~JUNE~~ 2005
~~DECEMBER~~

Volume 2 Issue 7

Applications for membership in the EVMTFC may be obtained from any current member or from the Vice President/ Membership Chairman Joe Fellin at (480) 288-6463. Dues are \$20.00 per year and include all family members.

The East Valley Model T Ford Club is affiliated with and is a chapter of The Model T Ford Club of America (MFTCA), a national and international organization. Membership in The MFTCA includes six issues of **The Vintage Ford** and a vote for the Board of Directors. Dues are \$26.00 annually. Membership is strongly encouraged. Direct correspondence to:

The Model T Ford Club of America
P.O. Box 126, Centerville, IN 47330
(756) 855-5248 FAX (765) 855-3428
e-mail:

NATIONAL EVENTS

June 11-16, 2006. Riverside, California, the MFTCA's Western National Tour, The Orange Blossom Tour will be hosted by the Riverside-Corona Model T Club. For information, contact Phil Emmerson, 2221 Karendale Circle, Riverside, CA 92506. Phone (951) 780-8769. E-mail:

(be sure to note: Model T Tour in subject line.)

June 18-23, 2006. Massachusetts. The MFTCA's Eastern National Tour, The Central Mass T Party will be hosted by the Central Massachusetts Model T Club. For

information, contact David Loving, 31 West St., Mansfield, MA 02048. Phone (508) 339-9667. E-mail:

PRESIDENT'S MESSAGE

By George Elms

I hope you all had a Happy Thanksgiving with family and/or friends.

Our next get together is for our Christmas Party on the 10th of December at Organ Stop Pizza at 4:00 P.M. Bring a gag gift. After Organ Stop Pizza, we will tour to see Christmas lights. Anyone considering driving the "T" at night?

In January we will meet at the B & B Farms on the 14th at 8:00 A.M.

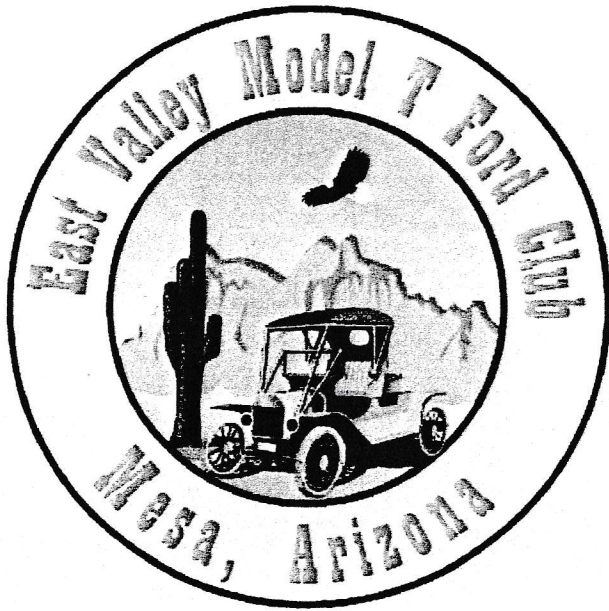
Plan on participating in the Lost Dutchman Parade on February 25th and bring a Pot-Luck dish to The Stolinski's afterward.

Welcome to New Members; All others remember that dues are due on January 1st. (\$20.00).

Happy Travels!

Health and Welfare

Jean Reith had a good week this past week. She got a ride in Joe's centerdoor for the first time in about six months.



PHOENIX AZ 850

06 DEC 2005 PM 4 T

Calendar of Events

December 2005

10 Christmas party at Organ Stop Pizza
4:00 PM

January 2006

1 Dues are payable

14 Breakfast at Midwest Meats at 8:00
and tour of B&B Farms

19 General Meeting at Linney's home
at 7:30 PM

February 2006

16 General Meeting at Linney's home
at 7:30 PM

25 Lost Dutchman Days Parade in
Apache Junction

PHOENIX AZ 850

06 DEC 05 PM 8 T



East Valley Model T Ford Club
2520 East Pueblo Avenue
Mesa, Arizona 85204

John & Jan Peterson
925 W. 11th Place
Mesa, AZ 85201-3117

Mesa Veterans Day Parade

We had a good turnout for this 11 November event. Ed and Delores Stolinski with their 1922 centerdoor, Dave Veres with his 1924 coupe, John and Jan Peterson with their 1924 tudor and Steve and Jessica Linney with their 1919 speedster. George Elms attended as a spectator because his car was still in New Hampshire. A good time was had by all, and there was a great crowd. See pictures Elsewhere in this newsletter.

RECIPE OF THE MONTH

Chicken Pot Pie

1/3 cup butter
1/3 cup flour
1/3 cup chopped onion
½ tsp. Salt
¼ tsp. Pepper
1 ¾ cups chicken broth
2/3 cup milk
2 cups cut-up cooked chicken (or turkey)
1 pkg. 10 oz. frozen peas & carrots
1 cup cooked potatoes (cubed)
1 pkg. Prepared pie crust (the type that you unroll).

Heat butter over low heat until melted. Blend in flour, onion, salt & pepper. Cook over low heat, stirring constantly, until mixture is smooth and bubbly; remove from heat. Stir in broth, milk & potatoes. Heat to boiling, stirring constantly until the mixture thickens a bit. Stir in the chicken and frozen vegetables. Pour the mixture into the pastry lined pie pan. Put the second crust on top and flute. Slit the top crust in the center. Bake at 425 degrees for 30 to 35 minutes or until the crust is golden brown.

COMING EVENTS

10 December – Christmas party at Organ Stop Pizza, 1149 E. Southern Ave, Mesa. You should arrive about 4PM for eats and our gag gift exchange. At about 6PM we will depart for a Christmas light tour. Come-on, be brave, drive your Model T!!

21 January – Breakfast and orange grove tour sponsored by Bert Diehl. Meet at Midwest Meats, 4308 E. Main, Mesa at 8:00 AM for breakfast and tour of B&B Farms at 3404 N. Val Vista, Mesa.

19 January – General meeting at Linney's at 7:30 PM. The address is 2520 E. Pueblo Ave., Mesa.

16 February – General meeting at Linney's at 7:30 PM. The address is 2520 E. Pueblo Ave., Mesa.

25 February – Lost Dutchman Days Parade in Apache Junction.

Possible overnight to Tucson to visit the Franklin Museum.

EAST VALLEY MODEL T FORD CLUB 2005 OFFICERS

George Elms, President
(480) 831-0835

Steve Linney, Immediate Past President
(480) 833-1907

Joe Fellin, Vice President/Membership
(480) 288-6463

Claudia Linney, Secretary
(480) 833-1907

John Peterson, Treasurer
(480) 969-0695

Jan Peterson, Historian
(480) 969-0695

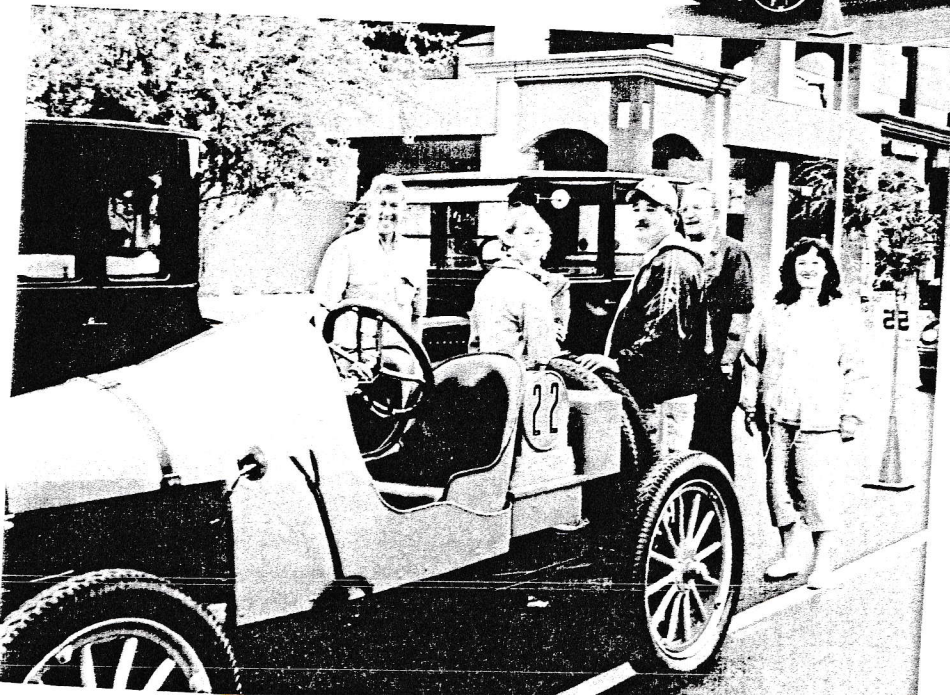
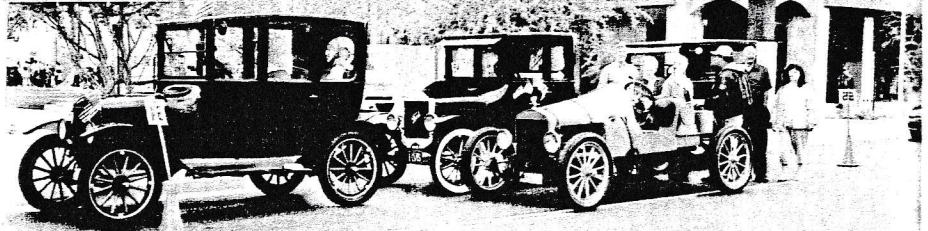
11 Nov Mesa
Veterans Day
Parade

Dave Veres →



← The Crowd on The
Parade Route

All 4 Cars →



← Close-up of our
gang in above picture



PHOTOS SUBMITTED
BY
STOLINSKIS

3 Pages of pictures of The Antiqueville Show



DAVE VERES'S
CAR

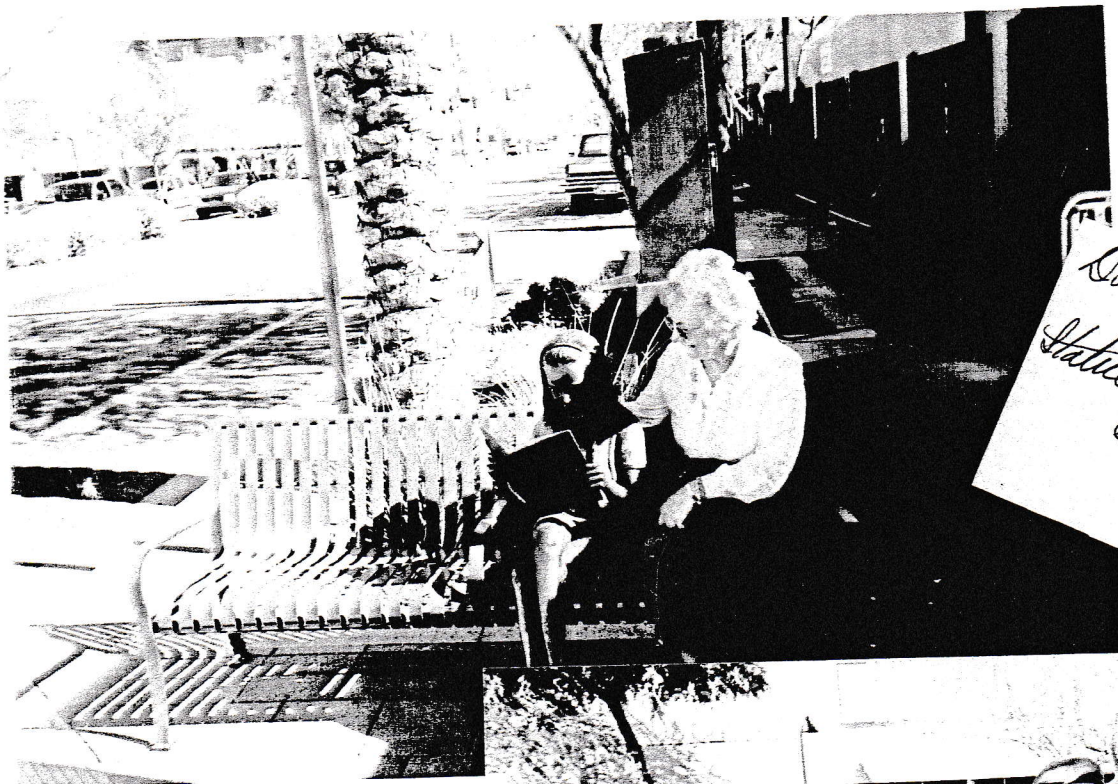


*Ed Stoliniski's
Car*



*THE
Usual
Suspects*





*Dolores Stolarski
&
Statue of Reading
Girl*



*Mardy Burr,
Owner of
Antiquesville
Store*



*Steve
&
Jessica
Kinney*

