



OFFICIAL PUBLICATION OF THE EAST VALLEY MODEL T FORD CLUB
FEBRUARY 2006 **Volume 3 Issue 2**

Applications for membership in the EVMTFC may be obtained from any current member or from the Vice President/Membership Chairman Joe Fellin at (480) 288-6463. Dues are \$20.00 per year and include all family members.

The East Valley Model T Ford Club is affiliated with and is a chapter of The Model T Ford Club of America (MTFCA), a national and international organization. Membership in the MTFCA includes six issues of *The Vintage Ford* and a vote for the Board of Directors. Dues are \$29.00 annually. Membership is strongly encouraged.

Direct correspondence to:

The Model T Ford Club of America
P.O. Box 126, Centerville, IN 47330
(756)855-5248 FAX(765)855-3428
E-mail: admin@mtfca.com

NATIONAL EVENTS

June 11-16, 2006. Riverside, California, the MTFCA's Western National Tour, The Orange Blossom Tour, will be hosted by the Riverside-Corona Model T Club. For information, contact Phil Emmerson, 2221 Karendale Circle, Riverside, CA 92506. Phone (951) 780-8769. E-mail: Tengine@aol.com (be sure to note Model T Tour in subject line).

June 18-23, 2006. Massachusetts. The

MTFCA's Eastern National Tour, The Central Mass T Party, will be hosted by

The Central Massachusetts Model T Club. For information, contact David Loving, 31 West St., Mansfield, MA 02048. Phone (508)339-9667. E-mail: thundercastle@comcast.net.

PRESIDENT'S MESSAGE

By George Elms

What great weather to ride in a Model "T"! Why don't we tour twice a month? Anyone interested?

This month we will be doing just that by gathering on Thursday the 9th to drive to see Jean Reith (and Joe) to say Hi and then on to see Bob and Idros Wildman. We meet at the Petersons at 10:00 AM and should leave by 10:30. Any ideas on where to stop for lunch afterwards?

On the 25th we will be participating in the Apache Junction 'Lost Dutchman Days' parade. Meet at the Graton's by 8:00 AM to drive together. Our line-up number is unknown at this time. After the parade we are invited to the Stolinski's for "Pot Luck" dining. Bring your favorite dish (or experiment) and a good appetite.

In March we again will be attending the Grand Hotel Antique Sale on the 12th,



Calendar of Events

February 2006

- 16 General Meeting at Linney's Home at 7:30 PM
- 18 Yard Sale at Linney's
- 25 Lost Dutchman days Parade in Apache Junction

March 2006

- 11 Car Show at Sirrine House, Mesa
- 12 Car Show at Grand Hotel, Apache Junction
- 16 General Meeting at Linney's Home at 7:30 PM

April 2006

- Overnight to Tucson, Franklin Auto Museum

May 2006

- Overnight to Fort Tuthill, Flagstaff (tentative)

East Valley Model T Ford Club
2520 East Pueblo Avenue
Mesa, Arizona 85204

PHOENIX AZ 850

01 FEB 2006 PM 4 T



John & Jan Peterson
925 W. 11th Place
Mesa, AZ 85201-3117



from 9:00 AM until 2:00 PM. For those willing to, we may offer rides to boost the club treasury.

Ruthann and I drove the Route to Tucson through Florence, for our anticipated April tour and will be making another trip to find appropriate accommodations and restaurants. Anyone interested in following with a Trouble Trailer?

Although we plan to make it to most of these events, Ruthann and I will be in Seattle briefly in the middle of February. We will miss the monthly meeting on the 16th. Carry on Joe!?

See you on the 9th if I get my new Kevlar bands in! Have you got wheels Austin?

REFRESHMENTS

February-Joe Fellin

March-Jerry and Mary Griffin

April-Austin and Lynn Graton

JANUARY TOUR 'OFF TO THE GROVE' by Bert Diehl

Early January tours are always interesting since it seems you're leaving the 'barn' about the time the sun comes up. It felt like the sun had just made it over the horizon when I left my house and headed on down the road for breakfast with the East Valley Motley T group at Midwestern Meats located on Main St. in Mesa between Greenfield and Val Vista. Pretty chilly at 7:30 AM so in a way I was glad I was in the coupe although it doesn't have an 'intentional' heater in it. All that heat that comes blasting back into the drivers compartment in the summer was totally absent this January morning. But the

engine was chugging along nicely, the air was clean and crisp and I'll be darned if that doesn't look like a Model T Tudor Sedan ahead of me.

It's the Graton sedan and as I turned the corner off of Greenfield onto Main I watched the ol' flivver go right by the restaurant parking lot and down the road to the west. What does he know that I have done or is the driver just enjoying the morning drive? I decided that rather than chasing him down I'd pull in the parking lot and wait for him to come back around. Sure enough, a few minutes later the Tudor pulls into the parking lot after making a lap around the block but it's making a horrible noise. After exchanging greetings the conversation quickly changed to the noises coming from the machine. It wasn't long afore we had a nice little gang of folk from the club chattering away in the lot with some of it centered around the problem. First things first however and the group found it's way into the dining area of Midwestern Meats for more chatter and a nice breakfast selection off the menu. The staff was attentive and tolerant and I heard several comments about the 'old cars' in the parking lot from people as we left a little over an hour later.

The tour continued with a relatively short drive up Val Vista Dr to B&B Farms. B&B is owned and operated by the Burden family headed up by Ray Burden. Lisa Burden and the rest of the 'on duty' staff at B&B greeted us early arrivals at the front of the store with slices of fresh navel orange. Austin had decided to push the Tudor and attempt the drive up to B&B. The car was obviously having a problem so Austin was driving it slowly and the few of us that were in the lead

pack anxiously awaited the lagging pack with the ailing Motley T. It was great to see them come down off the hill and through the citrus trees with a line of moderns behind them.

We reassembled as a group and were led into the sorting and packing area of the B&B Farms where Ray Burden gave us a talk about the history of the orchard and the area. B&B operates on 35 acres of land composed primarily of navel oranges and many of the trees in the orchard are over 90 years old. Ray explained that when the route of the 202 loop was being laid out it was originally intended to pass directly through the orchard but after interviewing the Burden's and examining documents showing the age of the trees in the orchard the path of the highway was rerouted to the north. A demo was also provided of the sorting machine used at B&B which was originally built and operated in the Yuma, AZ area circa 1911. Darned thing ran flawlessly or at least better than the Tudor parked out front. The East Valley Model T Club enjoyed the visit to B&B Farms and thanked the Burden family for allowing the club to visit.

It's always fun to get out on the road for breakfast and a tour even if the early morning air is a tad chilly. The Tudor was eventually trailered back to the Graton compound from the B&B Farms parking lot. The incident added a bit of adventure to the short trip and won Austin the club hard luck trophy. Here's hoping it doesn't take long to repair the rear end gear problems so the car will be back on the road in time for the next tour. The rear End

UPCOMING EVENTS

It looks like we have quite a variety of interesting and fun events coming up in the next few months. If anyone else has an idea for an event they think the club would be interested in attending, please bring it up. Also, if you are willing to sponsor an event, let us know.

Come on out to these events even if you don't have a running T - or even if you just have a running Model A!!!

9 February - Tour to visit Jean Reith (and Joe) and Bob and Idros Wildman. Meet at Peterson's at 10 AM

16 February - General meeting at Linney's at 7:30 PM. The address is 2520 E. Pueblo Ave., Mesa.

18 February - Yard sale at the Linney's. This has become our primary fund raiser for the club, so dig in that closet or garage and find some things to sell. Final planning will take place at the 16th general meeting.

25 February - Lost Dutchman Days Parade in Apache Junction. Meet at Graton's by 8:00AM. Pot luck at Stolinski's after the parade.

11 March - Car show at the Serrine House in Mesa

12 March - Car show at the Grand Hotel in Apache Junction

April - Overnighter to Tucson to visit the Franklin Auto Museum

May - Overnighter to Fort Tuthill in Flagstaff (tentative)

Monthly Recipe

Magic Lemon Meringue Pie

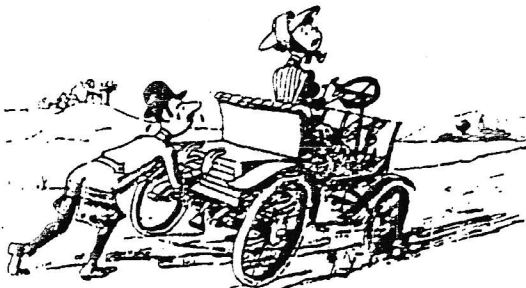
1 can sweetened condensed milk, ½ cup lemon juice, grated rind of 1 lemon or ¼ teaspoon lemon extract, 2 eggs separated, 2 tablespoons sugar, 8 inch pie shell (baked). Blend together milk, juice, lemon rind or extract and egg yolks. Pour into pie shell. Cover with meringue (beat egg whites till stiff, add sugar). Bake at 350 for 10 min. or till brown. Chill

HEALTH AND WELFARE OF CARS

Good news from down south!! Florence, that is. Harold Hall took his cars to Pinal County's Annual Car Show and Fiddlers Jamboree in January. He won **Best of Show!!!** Way to go Harold! He recently got them both running much better by installing distributors. We will see you at the Lost Dutchman Days Parade, Harold.

The Graton's 25 Tudor is up on jack stands in their shop with it's rear end removed and parts scattered about the floor. The good news is that there are no major components that need to be replaced.

Jerry Griffin is getting the seat in their 1923 Roadster reupholstered as well as the door and kick panels. Hope to see you back on the road soon, Jerry!!



EAST VALLEY MODEL T FORD CLUB 2006 OFFICERS

George Elms, President

(480) 831 0835

Steve Linney, Immediate Past President

(480) 833-1907

Joe Fellin, Vice President/Membership

(480) 288-6463

Mary Griffin, Secretary

(480) 983-1513

John Peterson, Treasurer

(480) 969-0695

Jan Peterson, Historian

(480) 969-0695



THE THORN.

By George Fake

No matter how hard the road!
No matter how steep the grade!
No matter how light your load!
No matter the miles you've made!

No matter how fast you are!
No matter your pow'r nor tread!
You'll find there's always a car
That's gotten there just ahead!

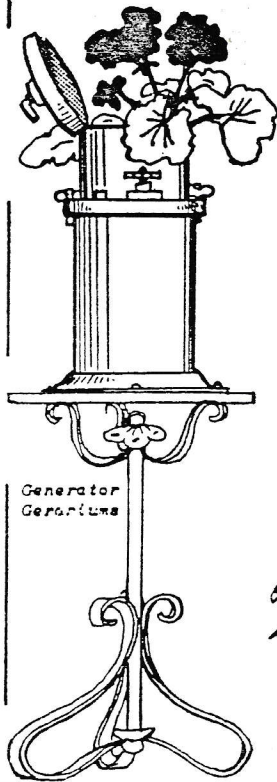
No matter how long the way!
Nor tireless the foot and hand!
Nor stormy nor hot the day!
Nor mud nor slush nor sand!

No matter how far behind
You've left the boiling horde!
At the end of the hardest grind
You'll find a grinning Ford!

NEW PLANTER IDEAS!

Hey Gals! Here is a way to help hubby clean out the garage. Take all the old used parts laying around and do some re-decorating.....

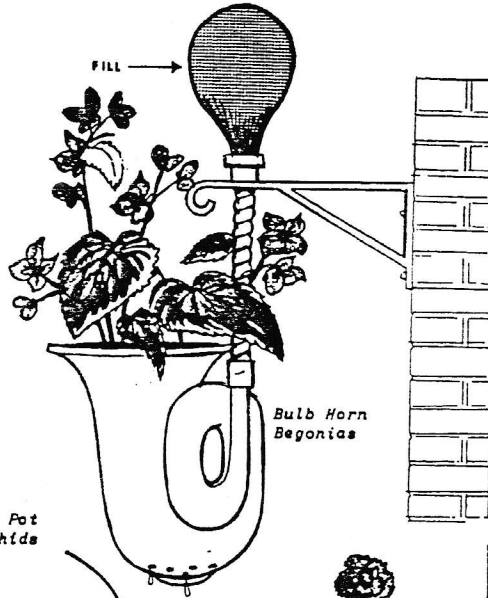
Thanks to the Horseless Carriage Gazette



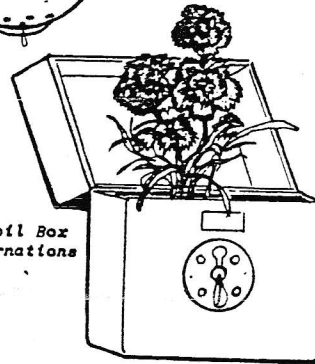
Generator
Geraniums



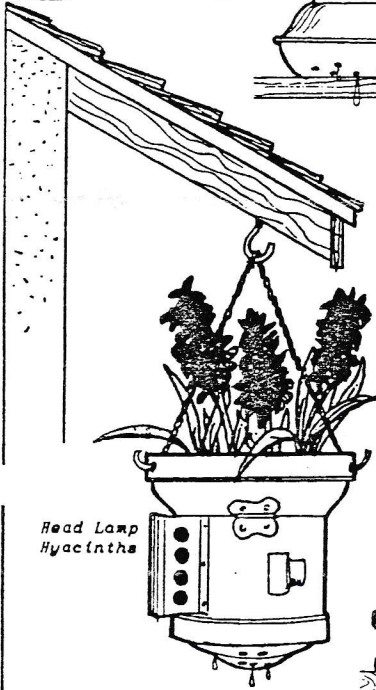
Oil Pot
Orchids



Bulb Horn
Begonias



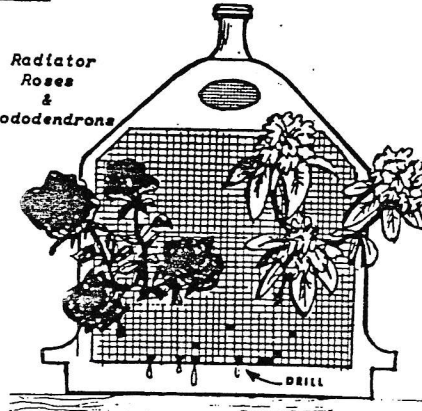
Coil Box
Carnations



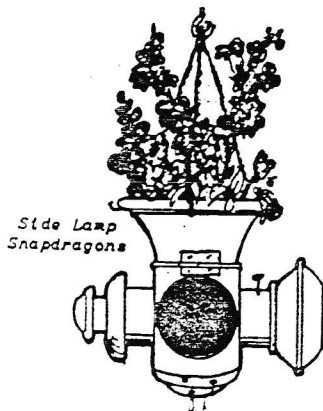
Head Lamp
Hyacinths



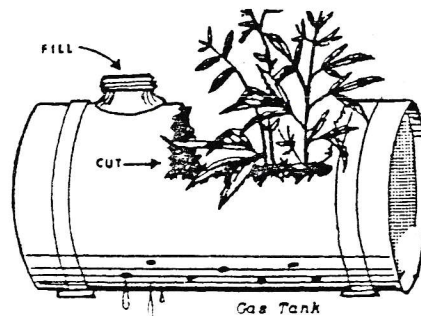
Radiator
Roses
&
Rhododendrons

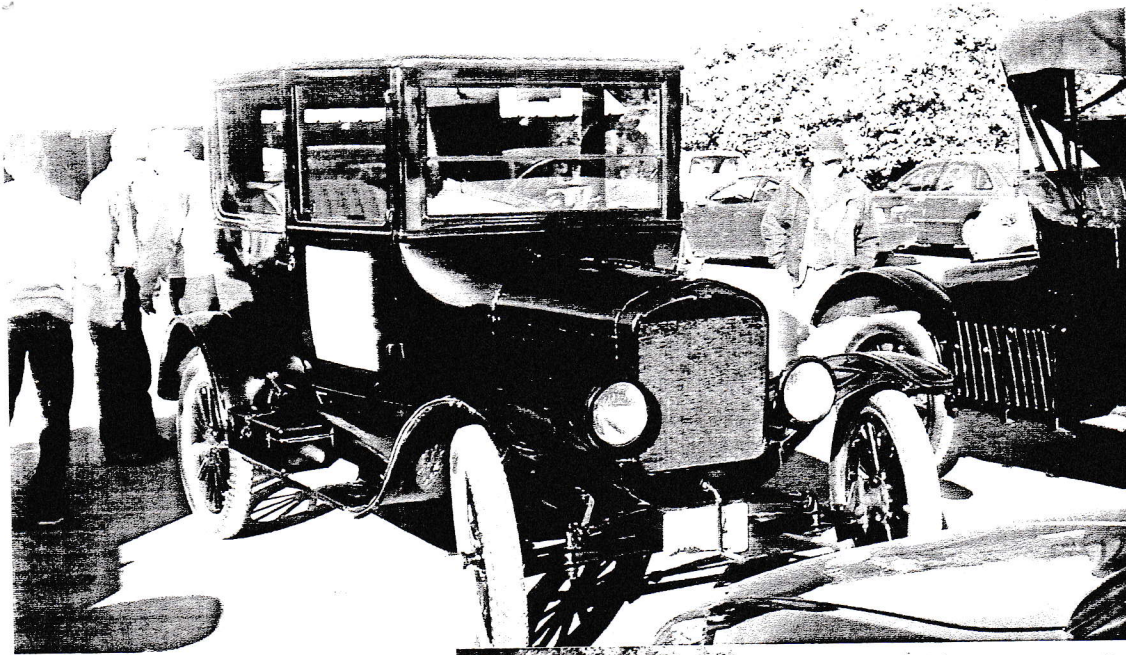


Gas Tank
"Goldenrod"



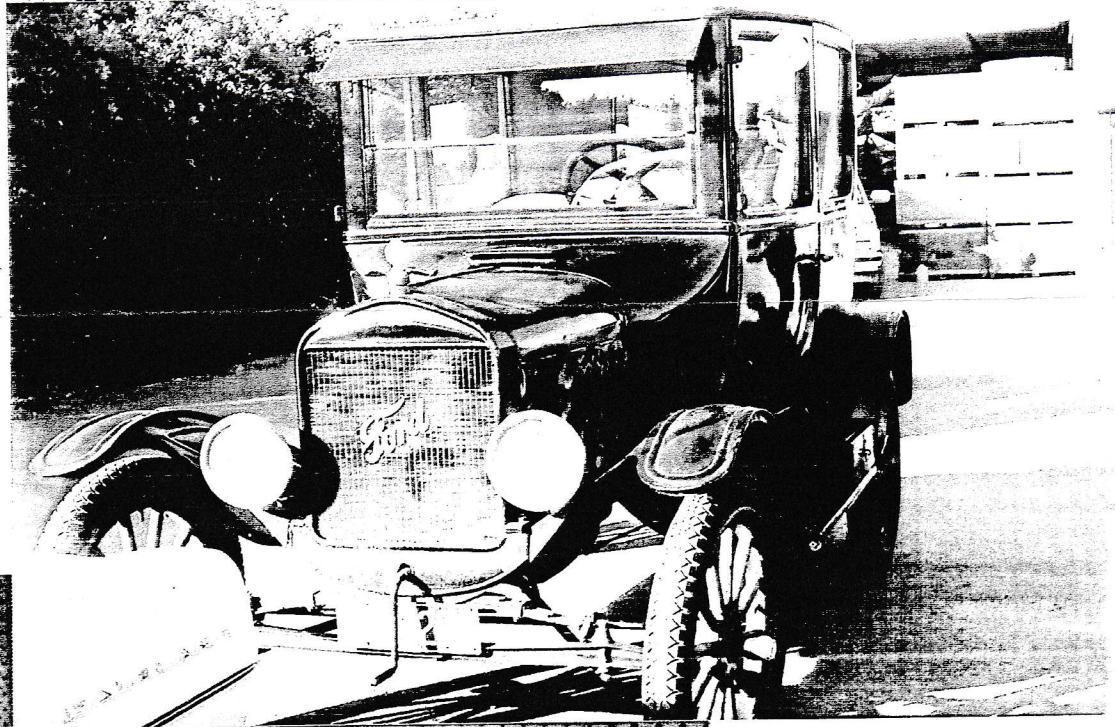
Side Lamp
Snapdragons





Yes, The car on
The left is The
1925 Tudor That
← has a broken
rear end, The
Elm's new
1917 Roadster
is at The right.

This is The
Peter son's
Trouble free →
Tudor.



Good To see
Tim Wood also
made it to an
event. We
← also had 4
young people
This Saturday
morning.

Steve caught with
his mouth closed.

Dave caught with
his mouth full.



Did The photographer
Tell Bert, John, Jan
and Joe To be
quiet?



Is Mary Thinking
about notes she
has to take? Jerry
is not concerned
and Cheryl may be
Thinking, glad it's
not me!!



It was great to
see Steve Kozak
and meet Gladys.
← Hope To see you
more often. That's
our president
mugging it up