

Runningboard



News

OFFICIAL PUBLICATION OF THE EAST VALLEY MODEL T FORD CLUB

March 2024

Volume 22, Issue 3

A Perfect Day for a Tour of Lake Saguaro



Four die-hard Model T's and a few modern cars, drove members to Saguaro Lake for lunch at the Shiprock Cafe and a nice tour of the lake, on the Desert Belle. What a fun day!

See all the EVMTFC club activity pictures on our Facebook Page!

**East Valley Model T Ford Club 2702 West Kiva Ave. Mesa, AZ 85202
Website: evmtfc.com FB <https://www.facebook.com/evmtfc/?fref=nf>**

EVMTFC (East Valley Model T Ford Club)

Website: evmtfc.com Be sure to check our website often for new and updated information.

Officers/Contact Information:

Tom Hoverson, President/ (Board Member) tom1757@aol.com (602) 292-3921

Dave McAlpin, Vice President (Board Member) dgnalpin@gmail.com (402) 540-5454

Janine Rohde, Secretary (Board Member); 262-945-9222

Dave Veres, Treasurer (Board Member); 480 480-415-3235. davidveres@aol.com

Sandy Hart, Immediate Past President; 480-266-4688. ken_cher@cox.net

Other Assignments:

Jan Peterson, Health & Welfare/Smiley Person; 480 756-4311..

Tom Hoverson, Tour Chairman; 602 292-3921, tom1757@aol.com

Cher & Ken Henry, Newsletter Editor; 480-266-4688. ken_cher@cox.net

Jeff Henry, Web Master; (480) 888-6349. jhenry123_321@yahoo.com

Jan Peterson and Cher Henry; birthday cards

Membership Dues: Dues are \$20 per year and include all family members. Please make payment by check payable to East Valley Model T Ford Club. Submit application in person at any member meeting or mail it to: David Veres, Treasurer, EVMTFC, PO Box 24502, Tempe AZ 85285.

Applications for membership in the EVMTFC may be printed from the website at evmtfc.com or obtained from any current member or from the Vice President/Membership Chairman.

Newsletters: We e-mail our monthly newsletter, *Runningboard News*, which also can be viewed on our website. All articles, photos and information for the upcoming newsletter is due to the Editor by the 26th of the month.

Members Cars (Our T's):

Jeff Henry can take a photo of your T... contact Jeff if you are interested.

Jeff can put a photo of your T on our website. Send him a photo of your T.

MTFCA (Model T Ford Club of America): The EVMTFC is affiliated with, and is a chapter of, the MTFCA, a national and international organization. Membership is strongly encouraged. As a chapter of the MTFCA, at least 50% of our members must be members of the national club to keep our free liability insurance. Our club is doing very well in this regard, as almost all of our members belong to the national club.

Membership in the MTFCA includes all the privileges of the Club, including six issues of the *Vintage Ford* and one voting ballot per member-family for election of the Club's Board of Directors. Annual dues are \$40. Lifetime Memberships are available. Payment may be made by check, credit card or PayPal.

Are your MTFCA dues paid up? If your MTFCA member number is not listed on the roster, please call the President or the Treasurer with the number. The number is shown on your mailing label when you receive your *Vintage Ford* magazine.

The Model T Ford Club of America and Model T Museum

309 N. 8th St. Richmond, Indiana 47374 Phone: 765-855-5248 Fax: 765-855-3428 E-mail:

admin@mtfca.com



Hello Model T Enthusiasts.

Our March 9 Apache Junction Engine and Tractor show was a great success. The weather was excellent with the attendance of 12 cars and about 20 club members. The weather was so good that donations for water were off. Our club meeting on the 13th went well with snacks provided by Dave Veres. The Desert Belle boat tour went off without a hitch. 27 members attended with lunch at the Shiprock Restaurant both good food and great and fast service. Again, the weather could not have been better. On April 7, at 2 PM we will meet again for ice cream, as the weather warms, at Highway 88 Ice Cream Parlor at 300 W. Apache Trail. I will send a separate invite for our April 13 Rosson House Tour. I am also pleased to say that Dale Mewhorter's recent purchase of a beautiful 26 Tudor was successful and is up and running with the help of Bill Allen.

Thomas Hoverson

**Help save the planet “Buy a car that lasts a hundred years”
Drive a Model T**



UP AND Coming Events

April 7 – Ice Cream at Highway 88
Ice Cream Shop located at 300W
Apache Trail Apache Junction.

April 10- General meeting, Green
Room Roadhaven Golf and
Dave
Resort

Rossen House TBD

April and May Birthdays

April 14 Colleen Davies
April 16 Reg Urness
April 19 Fred Camarena
April 27 Joe Fellin

May 1 Jan Peterson
May 11 Daryl Drumwright
May 23 Dave Allen

HAPPY BIRTHDAY!

While our normal meeting place is under construction, we will be meeting at the Roadhaven Golf and RV Resort, Green room. Mark these dates on your calendar:

January meeting on January 10th
February meeting will be on February 7th
March meeting will be on March 13th
April meeting will be on April 10th
May meeting will be on May 8th

Note: We will not be having snacks or drinks! (Room restriction)

Thank you, Jim and Janine Rohde, for arranging a place for us to meet!

REMINDER.DUES ARE Still Just \$20
Contact Treasurer Dave Veres at 480-480-415-3235. davidveres@aol.com

Meeting Minutes Mar 13, 2024 Submitted by Jim Rohde**Call to Order:**

The meeting was called to order by Tom Hoverson at: 7:05 there were approximately 20 people in attendance.

Pledge of Allegiance. The pledge of allegiance was recited by the club.

Steve and Linda Jones from Tucson have joined the club.

Approval of October minutes. The minutes were approved as published.

Vice President report:

Treasurers report Dave Veres:

Collected \$100 in dues.

\$67 for the sale of water at the tractor show

Spent \$63 for food for Dave Kerr get together.

\$135 was spent for food and drinks at the tractor show.

\$198.98 was paid for the Go Daddy website fee. This fee is good for several years.

Hospitality Well wishes for Marilyn Francois for her recent illness.

Jan Peterson was not in attendance; we don't believe that there were any people sick that we are aware of.

Newsletter Ken & Cher Ken reported on the newsletter. Additional articles are always appreciated!

McAlpin's are going out to Bisbee for an event this weekend.

Old Business

Dave Ker, Lizzie Ranch, 75 people attended. Everybody had a good time. The weather cooperated at his house in Buckeye, despite it being not good in AJ and Mesa. Thank you, Dave, for hosting another fun event!

Breakfast at the OTG Restaurant was good. Afterwards we went to the Ponderosa house around the corner and down the block. It was very interesting. It was just like the one that used to be on the Ponderosa TV show.

The Lost Dutchman parade and poker run had 12 cars which was a very nice turnout and was well attended by the public.

The tractor show had 21 members in 12 cars in attendance we sold water to the public and \$67.

Next meeting is April 10th.

March 23 the Desert Bell boat tour we're going to meet at Bashes at 11 AM at Ellsworth and Brown Road. We're going to have lunch at 11:45 AM at the restaurant near the boat landing. The boat will start loading about 1:30 PM. 27 people have registered.

March 28 Dave Chance tour from his house at 9 AM to the memorial gardens. It's approximately a 50-mile round-trip. We will get back approximately 4 PM. Please RSVP Dave if you're going to attend so he can plan for food. We're going to meet at the museum at 10:30 at Gold city.

Wednesday, March 20 the trip to Tortilla Flats

A motion was made by Keith Gumbinger, seconded by Carol Gumbinger, and passed to wave dues for Dave Chance as a thank you for him inviting us to his house for the catered dinner.

April 7-2:00 PM ice cream at the "Highway 88 Ice Cream Shop" in Apache Junction located at 300 W. Apache Trail. It's in the shopping mall area on the west side.

April 13= Rosson House tour was discussed.

Other Old Business:

None was brought up.

New Business

The 50-50 drawing was one by Susan Stone. \$40 was taken in.

Break

They will be in the Green Room of the Golf Building until the Mesa Utilities building is available in the fall. A highlighted park map is below to help with directions.

Cxall to Order:

Clinics None planned.



Directions inside the park:

- Take Chippewa from the main entrance straight to the big building.
- Turn left on Cheyenne
- Turn right on Blackfoot
- At the stop sign turn left on Zuni
- At the second Right Turn onto Pecos go one block.
- At the yield sign turn left and make an immediate right turn to stay on Pecos.
- Go on black at the yield sign turn sharp left on Eno.
- Follow the curve around and it changes to Into.
- Cross Pomo and find a place to park. The golf building will be to the south.

EVMTFC having breakfast at On The Green Bar and Grill. This in leu of, Ice Cream Sunday. We had a great turnout, looks like we like breakfast more than Ice Cream!









Thank you, Dave McAlpin, for scheduling the lunch date at On the Green Bar and Grill. Four Model T's made the trip. By my count we had twenty-three members. We had a very nice lunch. Some members drove around the corner to see Ben Cartright's, Ponderosa House. It is now a private resident, so could only view from the outside.

**Need a hand with your Model T? Call Tom Hoverson to schedule a clinic.
You will get all the help you need!**

It is the annual Antique Tractor and Gas Engine Show at the Apache Junction Rodeo Grounds!



Every year the EVMTFC attends this show. They show their Tractors and antique engines, and we show our Model T cars. We had eleven Model T's and the Chuck Wagon. The Chuck Wagon, if you are not familiar with it, is a complete kitchen. It has a grill, refrigerator, sink with running water, a two-burner stove and plenty of storage. All built on a Model T like frame! It is Model T towable.





Steve Linney, cooking hamburgers and bratts for the club. Yeah, we eat good!



Life is good.

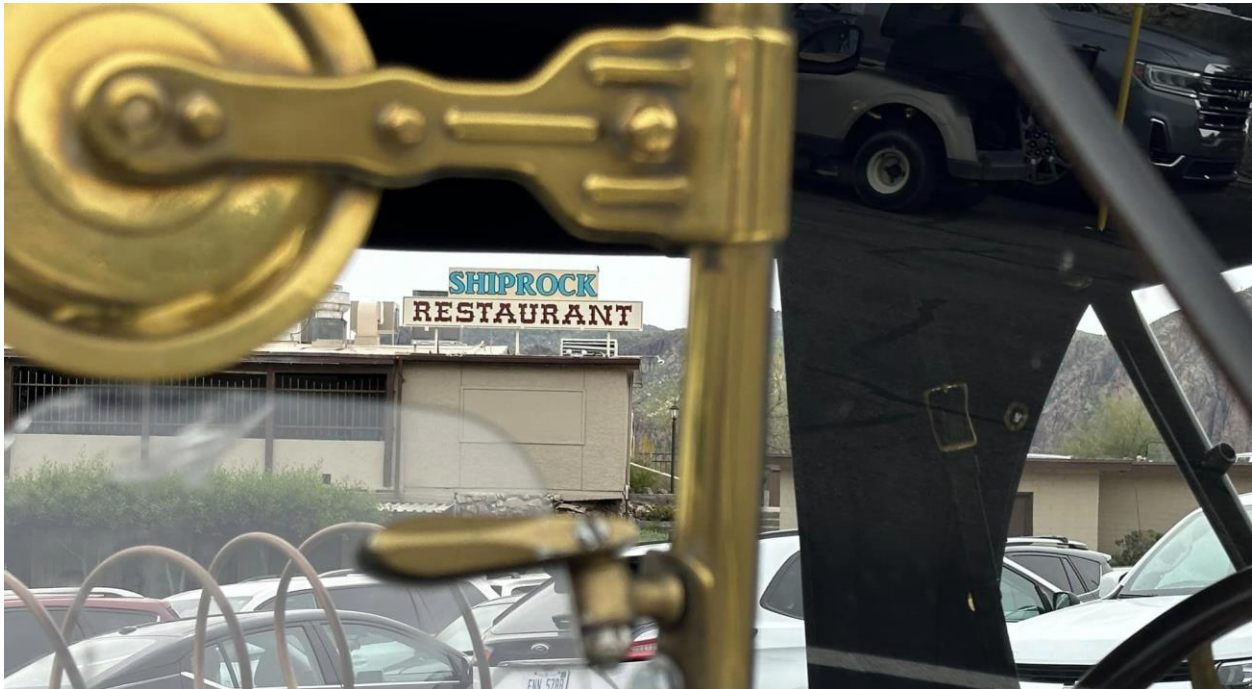




Kae Allen got an antique vacuum at the Silent Auction



EVMTFC spends day on Saguaro Lake



The East Valley Model T Ford Club made the drive on the windy road to Saguaro Lake for lunch and tour of the lake on the Desert Belle. Lary and Sandy Hart, Bill Arnold and Julie Hiesel, Keith and Carol Gumbinger, and Dave and Kathy McAlpin made the trip in their Model T's. We all met at the corner of Elsworth and Brown Road at 10:30am and arrived in plenty of time to have lunch at the Shiprock Restaurant. Lunch was good and served in record time. At 2:00pm we boarded the Desert Belle for tour of the lake. It was a nice, partly cloudy, day. Some members sat under cover and others braved the outside in the sun. Kae and Bill Allen were sat in the front row, lower deck and surprise surprise, Kae got her feet washed by a rogue wave. We have been blessed to have Bill and Kae Allen and Bob and Susan Stone spend some time with us, since they both have moved back to their hometowns.





Ken and Cher waiting for the tour to start.





Great lunch at the Shiprock Resturant
Good food! good People! Good Times!

Some great Views of Four Peaks and the surrounding mountains from the lake



Model T's that made the drive

Dave McAlpin's Tour to Bisbee

Since I purchased a Model A last year, I joined the East Valley Model A Club here in Mesa. They planned a tour to Bisbee, 270 miles each way, for Jan. 20th for 4 days. I left my Model A in Indiana this winter, & brought my 1912 Model T, even though they indicated that they would be traveling at 50mph, I knew my Model T would do it, because it is far from stock. There were 9 Model A's registered for the tour, and 1 Model T. Unfortunately, January 20th was rained out, and the tour was later scheduled for Feb. 10. As is normally the case on Model A and Model T Tours, on Feb 10, only 3 out of 10 cars showed up. It was raining again on that day, but we were going, rain or shine. I had already put my side curtains on because it was also a little cool. We met at Sammy's at 9:00am, and departed from there, and went to Florence, and south on Hwy 79 to Tucson. We stopped for a nice lunch at Tucson and skirted the eastern side of Tucson to stay off of major highways. It was non-eventful on the trip to Bisbee, except for some minor slush on the highway close to Bisbee, and a lot of snow in the road ditches and mountains at altitude. The altitude at Bisbee is 5,538 feet. We arrived at Bisbee about 4:00pm. We finally found our hotel, but the hotels in Bisbee are all Airbnb's. You make a reservation, and they give you a number for the lock on the front door, and your key is in the door of your room when you get there. There is no front desk. Unfortunately, they lost my reservation when it was changed from Jan. 20 to Feb. 10. So, after I finally got ahold of the owner, and found that they didn't have hot water until Tuesday, the day before we were to leave. So, I cancelled & got another one at a different hotel on the 3rd floor with 48 steps up, & no elevator. My room was decorated like a 1980's high school boy's room, with posters on the walls, funny lights, and a library of VHS tapes. No TV or microwave, so I tried listening to the radio, but it was all Spanish, because we were so close to the Mexican border. So, I watched VHS movies on a little 12" diagonal tv screen in the evenings. We did day trips to the Bisbee Mine, the Sandhill Cranes winter home at Whitewater, Tombstone, (where we had lunch at Big-Nose Kate's,) and on the last day went to the Kartchner Caverns. Bisbee was the "quirkiest" town that I have ever seen, which makes it both interesting and fun. We also watched the Superbowl at the Bisbee Royale, on a theatre-sized screen, and had a great time. We arrived at Bisbee on Sunday and left on Wednesday morning. On the way back, we also drove 50mph, which was easier for the Model A's, but I was able to keep up very well. Between Tucson and Florence, I was stopped by a young boy in a highway patrolman outfit, and it was the most bizarre stop that I have ever had. A car had passed me on the highway, and almost hit head-on with the highway patrolman that I was meeting. About 5 miles down the highway, I was pulled over by the patrolman. He said that I was going 20mph under the speed limit. I asked if there was a minimum speed on this highway? He said "Well, no, but there have been several close calls of people passing and he was one of them". I said that is their fault, not mine. I said that I looked in my rear-view mirror to see if you were turning around to cite him for Careless driving, or Improper Passing, but, instead, you stopped me for going under the speed limit. I said that we have been going between 48 & 50mph since Bisbee. He said, "I clocked you at 45mph". I said Yes, going up that hill. He said "Well, yeah". He said that you need to pull over and let cars pass you if you are holding cars up. I said that we always do, but there is no shoulder on Hwy 79. He said "Well, yeah." He said that it was "mainly an educational stop". OK, now I guess I'm educated. It was a 540 mile round trip tour, and altogether an enjoyable adventure. If you decide to travel to the "Quirkiest" town in AZ, Bisbee, I advise going on weekdays, as the hotel rates go up considerably during the weekends. Happy touring!

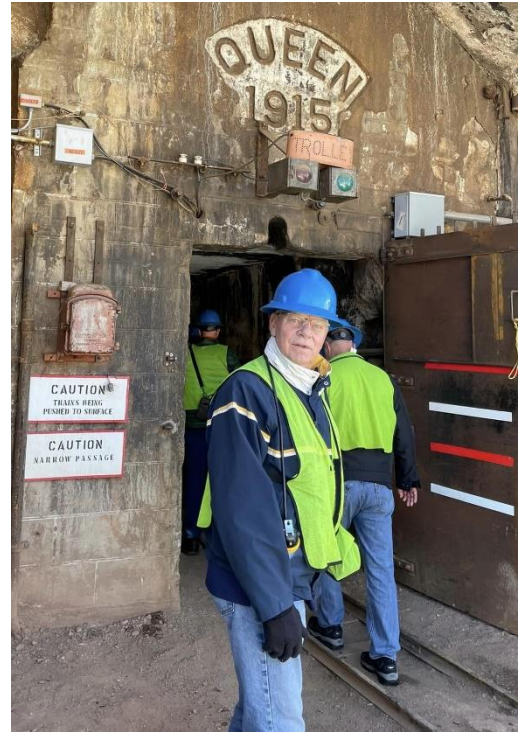
Dave McAlpin



Yes, Daves Model T was able to keep up with the Model A's



Looks like some cold weather. Good thing Dave had his side curtains on



**This was a great tour with the Model A Club
Dave McAlpin**

Model T Ford Club of America Event Calendar

March 22 - March 23 **59th MTFCA Annual Meeting**

Wyndham Grand 10 North Broadway Avenue, Oklahoma City, OK, United States

April 13 - April 14 **28th Annual Speedster Endurance Run and Low Land Tour**

May 3 - May 4 **Bakersfield Brass Era PreWar Swap Meet**

Famoso Drag Strip Bakersfield, CA, United States

May 5 **55th Annual Swap Meet and Garage Sale**

GCS Credit Union Ballpark 2301 Grizzlie Bear Blvd., Sauget, IL, United States

May 5 - May 8 **The California Rendezvous Tour**

Paso Robles Paso Robles

May 29 @ 12:00 am - June 1 @ 11:59 pm **Homecoming at the Model T Museum 2024**

Model T Museum 309 N 8th Street, Richmond, IN, United States

June 16 - June 20 **MTFCA 2024 National Tour: Trails Less Traveled**

San Diego, CA San Diego, CA, United States

July 20 **70th Annual Vintage & Classic Parts Exchange**

Long Beach City College Veterans Stadium Long Beach, CA, United States

August 30 - September 1 **35th Annual All Ohio Model T Jamboree**

Chillicothe, Ohio Chillicothe

September 14 @ 11:00 am **24th Annual Cars in the Park**

History Park 693 Phelan Ave., San Jose, CA, United States

Are you a member of MTFCA? If not, you are missing out on many benefits!

Adult Membership includes:

- One year (6 issues) of *The Vintage Ford* magazine which has information on all aspects of the hobby including: resources for Model T parts; repair and maintenance information; lists of tours, swap meets, and events; plus many pictures and articles for and about Model T enthusiasts;
- FREE admission to the Model T Museum, the Vintage Ford Agency Building, and the Bruce McCalley Memorial Library and Research Center.
- FREE (non-commercial) online and classified ads in magazine and on our Forum.
- Events and Tours: Join your fellow club members and relive the days of the Model T at national, regional, and local events and tours.
- Voting Privileges: Members (aged 18 and over) elect our Board of Directors each year.
- Time Travelers Perks: Your MTFCA membership card can be used at 300+ Time Travelers affiliated museums and sites for discounts and benefits.

NOTE: ***Ownership of a Model T Ford is not required.***

For Sale

1) A really nice set of four 21" Model T wood wheels mounted with serviceable Goodyear whitewall tires. Includes spare rim with mounted used B.F. Goodrich Blackwall tire. \$700 for all.

2) Like new set of four 4.40-4.50x21" B.F. Goodrich Silvertown blackwalls. It looks like they were mounted, but never saw the road. MACS Auto Parts has them for \$206.77 ea. with four of them coming to \$999.86 including tax and shipping. You can get these tires for \$125 ea.

3) I have three Model T wire wheels with one front hub and one rear hub. They haven't been primed or painted so there will be no surprises later on. \$350 for everything.

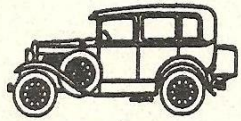
Contact Dale Guenther at dcguenther1@cox.net or 480-356-0733 for photos or info.

Need new wood in your Wheels?
Contact Dave Seiler, 714 501 7080, He is in Brea, California.
\$125 each. He does nice work!

Get all your Model T and Model A Parts at

ARIZONA MODEL A, L.L.C.

- NEW PARTS
- USED PARTS
- SERVICE
- RESTORATION
- HOUR: TUES-FRI 9-12, 1-5
- SAT & EVES BY APPOINTMENT



SAMUEL P. GUTHRIE

15838 S. GILBERT RD., CHANDLER, AZ 85225
(480) 782-0266



877 305-8966



888 262-5712