

*Runningboard*



*News*

**OFFICIAL PUBLICATION OF THE EAST VALLEY MODEL T FORD CLUB**

**Volume 22, Issue 7**



East Valley Model T Ford Club Website: [evmtfc.com](http://evmtfc.com)  
Facebook <https://www.facebook.com/evmtfc>

## **EVMTFC (East Valley Model T Ford Club)**

**Website:** [evmtfc.com](http://evmtfc.com) Be sure to check our website often for new and updated information.

### **Officers/Contact Information:**

Tom Hoverson, President/ (Board Member) [tom1757@aol.com](mailto:tom1757@aol.com) (602) 292-3921  
Dave McAlpin, Vice President (Board Member) [dgnalpin@gmail.com](mailto:dgnalpin@gmail.com) (402) 540-5454  
Janine Rohde, Secretary (Board Member); 262-945-9222  
Dave Veres, Treasurer (Board Member); 480 480-415-3235. [davidveres@aol.com](mailto:davidveres@aol.com)  
Sandy Hart, Immediate Past President; 360 431-1808 [deersanta15@gmail.com](mailto:deersanta15@gmail.com)

### **Other Assignments:**

Jan Peterson, Health & Welfare/Smiley Person; 480 756-4311.  
Tom Hoverson, Tour Chairman; 602 292-3921, [tom1757@aol.com](mailto:tom1757@aol.com)  
Cher & Ken Henry, Newsletter Editor; 480-266-4688. [ken\\_cher@cox.net](mailto:ken_cher@cox.net)  
Jeff Henry, Web Master; (480) 888-6349. [jhenry123\\_321@yahoo.com](mailto:jhenry123_321@yahoo.com)  
Jan Peterson and Cher Henry; birthday cards

### **Membership Dues:**

Dues are \$20 per year and include all family members. Please make payment by check payable to East Valley Model T Ford Club. Submit application in person at any member meeting or mail it to: David Veres, Treasurer, EVMTFC, PO Box 24502, Tempe AZ 85285. Applications for membership in the EVMTFC may be printed from the website at [evmtfc.com](http://evmtfc.com) or obtained from any current member or from the Vice President/Membership Chairman. Newsletters: We e-mail our monthly newsletter, Runningboard News, which also can be viewed on our website. All articles, photos and information for the upcoming newsletter is due to the Editor by the 26th of the month.

### **Members Cars (Our T's):**

Jeff Henry can take a photo of your T... contact Jeff if you are interested. Jeff can put a photo of your T on our website. Send him a photo of your T. MTFCA (Model T Ford Club of America): The EVMTFC is affiliated with, and is a chapter of, the MTFCA, a national and international organization. Membership is strongly encouraged. As a chapter of the MTFCA, at least 50% of our members must be members of the national club to keep our free liability insurance. Our club is doing very well in this regard, as almost all of our members belong to the national club. Membership in the MTFCA includes all the privileges of the Club, including six issues of the Vintage Ford and one voting ballot per member-family for election of the Club's Board of Directors. Annual dues are \$40. Lifetime Memberships are available. Payment may be made by check, credit card or PayPal. **Are your MTFCA dues paid up? If your MTFCA member number is not listed on the roster, please call the President or the Treasurer with the number. The number is shown on your mailing label when you receive your Vintage Ford magazine. The Model T Ford Club of America and Model T Museum 309 N. 8th St. Richmond, Indiana 47374 Phone: 765-855-5248 Fax: 765-855-3428 E-mail: [admin@mtfca.com](mailto:admin@mtfca.com)**





### **Hello Model T Enthusiasts**

Another holiday season is upon us. But first to recap November our breakfast at Mickey D's breakfast was a well-attended, great success with great food and service. Veterans Day parade and lunch went off without a hitch. The attendance in model T's was 11 cars and about 18 people at lunch.

Now we look forward to our 1<sup>st</sup> Sunday Ice Cream get together at Oldie's Subs and More, December 1. Then The Apache Junction Light Parade and our potluck at Roadhaven on December 7. To be followed with our Christmas club party at Mi Amigos on December 15.

Remember to give Dave Veres \$23 per person for our Christmas Dinner before December 8, bring a financial donation if you would like to donate to A New Leaf charitable organization at our Christmas Dinner. A Check or cash will be acceptable.

We continue to look for submissions for the Wildman award also. Suggestions should be sent to any past award winner.

And a warm welcome to our newest members Dick and Marilyn Pixler.

Tom Hoverson

**Reminder, Dues are still just \$20**

**Contact Treasurer Dave Veres at (480) 415-3235 [davidveres@aol.com](mailto:davidveres@aol.com)**

**Monthly meetings are every 2<sup>nd</sup> Wednesday at Mesa Dr. Mesa AZ.**

## Meeting Minutes November 13, 2024

Submitted by James Rohde Secretary

Call to Order:

The meeting was called to order by Tom Hoverson at: 7:07 there were 12 people in attendance.

Pledge of Allegiance

The pledge of allegiance was recited by the group.

The minutes were e-mailed out and a motion was made to approve then as published. The motion passed.

New Members: Dick Dixler

Dick went to East TX to look at a 1956 thunderbird. Unfortunately it was a scam. On the way back he found a 1914 Model T and purchased that while he was there. He owns a 1930 Model-A. He has owned that for 25 years. He also owns a 2020 Corvette. Dick was a private pilot too.

Vice President's Report:

Dave McAlpin

Treasurers report Dave Veres: Balance forward or \$3347.22 expenses of 60.41 left a balance of 3286.81 A motion was made to include November and December 2024 in the due's payment for Dick Dixler's 2025 annual dues.

Hospitality

Old Business

The October 7th breakfast Crackers Restaurant 535 West Iron Ave. Mesa. 7 were in attendance.

October 19th Steve Peterson clinic 9:00 am. 34822 N. Bardona Trail San Tan Valley AZ 85143. They got the car running. Additional work is needed.

October 26th. Usery park club picnic, the visitors center is incredible. Tom gave a report on the public opening of the new visitor's center.

November 11th the Veteran's Day parade. 9 model-T's and 2 A's were in attendance.

Dave McAlpin gave a report on a museum that he went to recently. Dave went \$10/person admission. Rolling through Time Museum. (Tucson?) 4750 S park Ave Tucson AZ 85714 520-372-2160. He spent 3 hours in the museum and said it was really terrific.

//December 7th Christmas parade 8:00 pm Pot luck tentatively at 4:00. Jim Rohde will reserve a spot at Roadhaven. Line up is at 6:00 pm.

//November 8th (Friday) they are having an event and requested 2 Model-T's Jeff & Ken Henry are displaying at (South Mountain Preserve).

December 15th 6:00 pm Christmas party at Mi Amigo's. Sandy and Kathy will get door prizes. \$400 was set aside for them. Dinner cost is \$17 plus gratuity. Total of \$23/person. Roadhaven won't make reservations yet so it was decided to make reservations at Mi-Amigos.

January 2025 Martin Auto Museum Tour (4320 W. Thunderbird Rd. Phoenix) and noon lunch at First Watch (4621 W Thunderbird Rd. Phoenix)

February Sanderson Ford Museum.

November or January Sanderson Ford Museum tour or Martin auto museum 4320 W. Thunderbird Rd. Phoenix. Tom volunteered to call and get information.

Future tour ideas:

Sanderson Ford tour

Culinary school in Scottsdale.

Some other suggestions were Busters in Chandler

Handles on Guadalupe and Val Vista,

New Business

First Sunday in Dec (1) ice cream

December 1 Oldies ice cream 2:00 pm in Apache Junction. 725 W. Apache Trail Suite 23 Apache Junction, AZ

Christmas parade December 7 @ 7:00 pm. Potluck from 3:30 to 6:00 Located in the Dakota room at Roadhaven 1000 S. Idaho Rd. Apache Junction. The club will provide paper plates and plastic utensils. If you want real ones bring your own.

Christmas dinner December 15th at Mi Amigo's Time meet there around 5:00 for cocktails and dinner is at 6:00. \$23/person for the meal. Individual donations for a charity will be collected. New Leaf battered women shelter is this years focus.

Wildman award. Given out at the Christmas party. We need nominations for the award. Submit them Tom Hoversen by December 6, 2024.

Martin's Auto museum tour (4320 W. Thunderbird Rd. Phoenix) and noon lunch at First Watch (421 Thunderbird Rd. Phoenix.) January 11, 2025.

Ladies-T January 18, 2025 (need a sponsor for this)

Sanderson Ford Museum February 8, 2025

February 22nd Lost Dutchman parade & Poker run

3/8/2025 AJ Tractor Show

March 2025 Tin Lizzy Ranch car show

Other new business:

Break

The 50/50 Dave McAlpin won the 50/50 raffle.

Fall meetings will continue on the Second Wednesday in each month the Mesa Utilities building.

Good of the Order:

Nothing reported this month.

Clinics.

A motion was made to adjourn the meeting. It received a 2nd. The club voted and it was closed at 8:35 pm.

Up and coming events

Dec. 7 Christmas Parade

Dec. 15 General Meeting  
and Christmas Party at  
Mi Amigo's 6:00pm

Jan. 8 General Meeting  
7pm

Jan. 29 Ladies Tea, hosted  
by Sandy Hart

Remember to check the  
EVMTFC Website for more  
information on all events

December and January Birth Days

Dec. 14 Claudia Linney

Dec. 16 Steve Francois

Jan. 5 Doyle Gaines

Jan. 16 Carol Johnson

Jan. 22 Frank Koonce

Jan. 28 Jan Henry



Welcome new members Dick and Mairlynn Pixler. They have a nice 1924 Model T Roadster, 1930 Model A and a very nice Corvett.

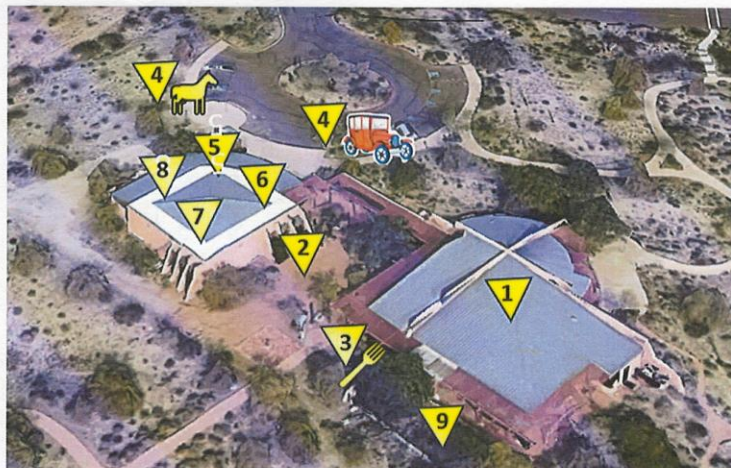
On November 8<sup>th</sup> Tom Hoverson and Ken Henry, drove their Model T's to South Mountain Park for the Parks Centennial Celebration. The city of Phoenix invited us to take part in their celebration. We were parked at the entrance of their new Visitor Center and was a photo opp. for visitors as they entered the celebration. So our cars were photographed many times. The photos were then sealed in a Time Capsule to be opened in another years. This is a great park and a must see if you have visitor from out of town.



- 9:00 a.m. Tribal Blessing
- 9:05 a.m. Welcome and Introductions
- 9:10 a.m. Dignitary Remarks
- 9:35 a.m. Ribbon Cutting at Visitor Center Entrance
- 9:40 a.m. Centennial Time Capsule and Photos
- 10:00 a.m. Mayor - Pollinator Planting
- 10:00 a.m. Ranger Led Hike

**9:45 – Noon Activities, Food and Entertainment**

- 1) Tour Visitor Center exhibits - Features a 16'x9' 3D Park model
- 2) Flute Music - Native American Artist Randy Kemp
- 3) Refreshments - Alyssa's Kosin
- 4) Photo Ops - Pictures will be placed in the Time Capsule
  - Horseback - Ponderosa Stables
  - 1920s Era Vehicles - East Valley Model T Ford Club
- 5) Desert Dwellers Showcase - Rattlesnake Solutions
- 6) Native Wildlife - Phoenix Zoo
- 7) Birds of Prey - Liberty Wildlife
- 8) T shirts with Centennial Logo – Council District 8
- 9) Pollinator Plantings – Public invited to plant a pollinator!







This is a scale model of South Mountain Park, with all of the hiking trails. Just push a button and the entrance and exit of the trail, lights-up. Very Nice!

November 2<sup>nd</sup> Breakfast at Mickey D's



## Veterans Day Parade

WOW! We had an amazing day at the Mesa Veterans Day parade. Great attendance by everyone. Once again we had the honor of transporting Lt. Col. Richard Michaud. Veteran of three wars with over 190 missions and recipient of the Distinguished Cross 5 times. Thank you all for your service.



**Richard will only be in the parade, if he can ride in a Model T**





**It's always hurry-up and wait.**



**A nice look back of our cars lined-up in the parade**

## **Model T Ford Club of America Calendar**

### **January 2025**

January 17, 2025 - January 18, 2025

Winter Clinic

McPherson College McPherson, KS, United States

### **February 2025**

February 1, 2025 @ 8:00 am - 5:00 pm

Annual Snowmobile Meet

Power sports North Country Rivers, Rte. 201, Bingham, ME, United States

### **June 2025**

June 4, 2025 - June 7, 2025

Homecoming at the Model T Museum 2025

Model T Museum 309 N 8th Street, Richmond, IN, United States

### **July 2025**

July 13, 2025 - July 18, 2025

Steam 'n T Party – Stettler Alberta

**Are you a member of MTFCA? If not, you are missing out on many benefits!**

Adult Membership includes:

- One year (6 issues) of The Vintage Ford magazine which has information on all aspects of the hobby including: resources for Model T parts; repair and maintenance information; lists of tours, swap meets, and events; plus many pictures and articles for and about Model T enthusiasts;
- FREE admission to the Model T Museum, the Vintage Ford Agency Building, and the Bruce McCalley Memorial Library and Research Center.
- FREE (non-commercial) online and classified ads in magazine and on our Forum.
- Events and Tours: Join your fellow club members and relive the days of the Model T at national, regional, and local events and tours.
- Voting Privileges: Members (aged 18 and over) elect our Board of Directors each year.
- Time Travelers Perks: Your MTFCA membership card can be used at 300+ Time Travelers affiliated museums and sites for discounts and benefits.

NOTE: Ownership of a Model T Ford is not required.

**Help save the planet! Drive a car that lasts 100 years. Drive a Model T**

**For Sale**

Nothing for sale?

**Need new wood in your Wheels?**

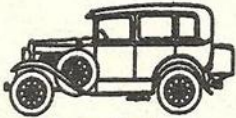
**Contact Dave Seiler, (714) 501-7080, He is in Brea, California.**

**\$125 each. He does nice work!**

**Get all your Model T and Model A parts at**

**ARIZONA MODEL A, L.L.C.**

- NEW PARTS
- USED PARTS
- SERVICE
- RESTORATION
- HOUR: TUES-FRI 9-12, 1-5
- SAT & EVES BY APPOINTMENT



SAMUEL P. GUTHRIE

---

15838 S. GILBERT RD., CHANDLER, AZ 85225  
(480) 782-0266

**(877) 305-8966**



**(886) 262-5712**

